

AUXO WD-OA080

IP69K

LED Work Light Technical Specifications and Parameters

Delicate Size & High Reliability.

Wide-ranged Input Voltage (9~32V).

Advanced Heat Dissipation Solution.

OSRAM LED chips.

Imported world-famous electronic components

Super anti-shock, anti-vibration, extreme waterproof.

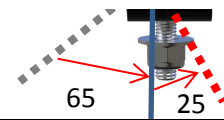


It's a 7 inch elliptical driving light which has adjustable color temperature function,

Support 3 Modes C.C.T with pur white(5700K), warm white(4500K), Yellow(3500K).

特性 Spec.	参数Features	技术标准Technical Data
规格 Item	保修期 Warranty	2 years
	灯体颜色 Color of the lamp body	Black powder coating
	反光杯 /Reflector	Super Flood 120°
	接头 Connector	Built-in Deutsch 3-pin
	安装螺丝 Mounting bolt	M8*1 and M10*1
	使用寿命 Lifespan	50,000 hours
灯体材质 Material of lamp body	支架/Bracket	Stainless steel 304
	后壳/rear housing	Aluminum Alloy
	面板/front lens	PC
2D Drawing	FRONT 正面	SIDE 侧面
可调倾角 Adjustable tilt angle	65° forwards	
	25° backwards	

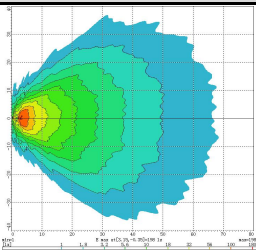
25° BACKWARDS



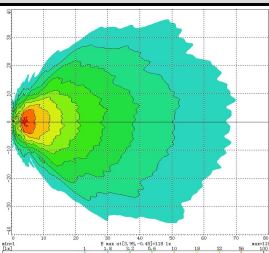
灯具信息 Product Info	长度 Length	176 mm
	宽度 Width	106 mm
	厚度 Thickness	85 mm
	色温 Color-changing Temperature	5700K ----- Pure White 4500K ----- Warm White 3500K ----- Yellow
	透光度 Light transmittance	90%
	驱动效率 Driving efficiency	80%
	工作电压 Operating input voltage	9~32V
	IP等级/IP Rating	IP69K
	振动等级/Vibration	15Grms24—2000Hz
	冲击等级/Shock	60G
	工作温度 Working temperature	-40~85℃
	储存温度 Storage temperature	-40~85℃
电子线路 Electronic circuit	Integrated driver	
电子参数 Electronic Parameters	灯珠 LED Chip	OSRAM P7
	功率 Power	80W
	理论光通量 Theoretical Lumens	8,000 lm
	实际光通量 Operational Lumens	6,000 lm
	额定工作电流 (12V) Rated working current	4.17A
	额定工作电流 (24V) Rated working current	2.08A
	净重 Net Weight (kg)	990g

光型图 Beam Patterns

1.5 meter height 水平光型图



2.5 meter height 高8度俯角光型图



保存期限：永久保存

表单编号：QP-17-032-A1