

圖號 DRAWING No. :FP3DR-NB-0

品名 NAME:Din Ring

ITEM No. :

校訂版次 REVISIONS

版次	記述 DESCRIPTION	DATE	核可

MAXIMUM ELECTRIC CURRENT

A. W. G	22	20	18	16	14	12	10
MAX AMP	9	12	17	18	30	35	50

WIRE RANGE AWG/mm <sup>2</sup>	產品編號 ITEM NO.	d2 ±0.20	B	F ±0.25	L ±1.00	E ±0.60	D ±0.30	d1 ±0.20 ±0.60	t
22-16 AWG 0.5-1.5 mm <sup>2</sup>	DIN 2.5-1B	2.7	6.0	11.0	14.0	5.0	3.5	1.6	0.8
	DIN 3-1B	3.2	6.0	11.0	14.0				
	DIN 3.5-1B	3.7	6.0	11.0	14.0				
	DIN 4-1B	4.3	8.0	12.0	16.0				
	DIN 5-1B	5.3	10.0	13.0	18.0				
	DIN 6-1B	6.5	11.0	15.0	20.5				
	DIN 8-1B	8.4	14.0	16.0	23.0				
	DIN 10-1B	10.5	18.0	18.0	27.0				
16-14 AWG 1.5-2.5 mm <sup>2</sup>	DIN 3-2.5B	3.2	6.0	11.0	14.0	5.0	4.1	2.3	0.8
	DIN 3.5-2.5B	3.7	6.0	11.0	14.0				
	DIN 4-2.5B	4.3	8.0	12.0	16.0				
	DIN 5-2.5B	5.3	10.0	14.0	19.0				
	DIN 6-2.5B	6.5	11.0	16.0	21.5				
	DIN 8-2.5B	8.4	14.0	17.0	24.0				
DIN 10-2.5B	10.5	18.0	18.0	27.0					
12-10 AWG 4-6 mm <sup>2</sup>	DIN 4-6B	4.3	8.0	14.0	18.0	6.0	5.8	3.6	1.0
	DIN 5-6B	5.3	10.0	15.0	20.0				
	DIN 6-6B	6.5	11.0	16.0	21.5				
	DIN 8-6B	8.4	14.0	19.0	26.0				
	DIN 10-6B	10.5	18.0	21.0	30.0				
	DIN 12-6B	13.0	19.0	26.5	36.0				

NOTE: DIN 46234

1. BRAZED SEAM

2. WIRE RANGE:22-16 AWG / 0.5-1.5 mm<sup>2</sup>

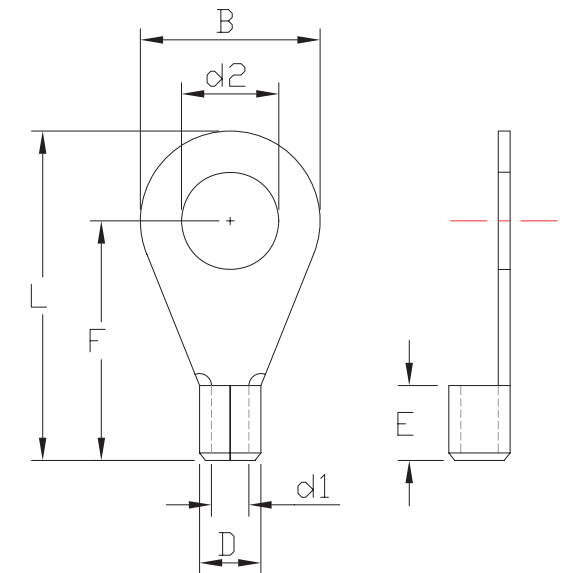
3. WIRE RANGE:16-14 AWG / 1.5-2.5 mm<sup>2</sup>

4. WIRE RANGE:12-10 AWG / 4-6 mm<sup>2</sup>

5. MATERIAL THICKNESS:t

TOLERANC:±0.05

B	
0-3	+0.00 -0.14
3-6	+0.00 -0.18
6-10	+0.00 -0.22
10-18	+0.00 -0.27
18-30	+0.00 -0.33
30-50	+0.00 -0.39



認可 APPROVALS

第三視角  
THIRD VIEW

MATERIAL

單位UNIT

製圖 DRAFT:

TINA

INSULATION:NON

m/m

設計 DESIGN:

KEN

MATERIAL:COPPER

比例SCALE

核可 CHECKED:

ANDY

TIN PLATING

日期 DATE:2015.01.05

