



THE UNITED KINGDOM VEHICLE APPROVAL AUTHORITY

COMMUNICATION CONCERNING THE APPROVAL GRANTED <sup>(1)</sup>/~~APPROVAL EXTENDED <sup>(4)</sup>~~/  
~~APPROVAL REFUSED <sup>(4)</sup>~~/~~APPROVAL WITHDRAWN <sup>(4)</sup>~~/~~PRODUCTION DEFINITELY~~  
~~DISCONTINUED~~ OF A TYPE OF FRONT POSITION LAMPS, REAR POSITION LAMPS, STOP  
LAMPS, DIRECTION INDICATORS AND REAR REGISTRATION PLATE ILLUMINATING DEVICES  
FOR MOPEDS, MOTORCYCLES AND VEHICLES TREATED AS SUCH PURSUANT TO  
REGULATION NO. 50.00.



Approval No: E11\*50R00/20\*50008\*00

1. Trade name or mark of the device: Speaker or 
2. Manufacturer's name for the type of device: Model 97
3. Manufacturer's name and address:  
  
J.W. Speaker Corporation  
N120 W19434 Freistadt Road  
P.O. Box 1011  
Germantown, WI 53022-8211  
U.S.A.
4. If applicable, name and address of the manufacturer's representative: not applicable
5. Submitted for approval on: 20 March 2018
6. Technical service responsible for conducting approval tests: Vehicle Certification Agency
7. Date of report issued by that service: 28 March 2018
8. Number of report issued by that service: T50R-50008 00

9. Concise description: <sup>(2)</sup> front position incorporated in a headlamp

By category of lamp: not applicable

Colour of light emitted: ~~red~~ / white / ~~amber~~ <sup>(4)</sup>

Number and category (ies) of light source(s): 1, LED

Light source module: ~~YES~~ / NO <sup>(1)</sup>

Light source module specific identification code: not applicable

Geometrical conditions of installation and relating variations,  
if any: refer to manufacturer's documentation

Application of an electronic light source control gear/~~variable intensity control~~:

(a) being part of the lamp: YES / ~~NO~~ / ~~NOT APPLICABLE~~ <sup>(1)</sup>

(b) being not part of the lamp: ~~YES~~ / NO / ~~NOT APPLICABLE~~ <sup>(1)</sup>

Input voltage(s) supplied by an electronic light source control gear/~~variable intensity control~~: not applicable

Electronic light source control gear/~~variable intensity control~~ manufacturer and identification number (when the light source control gear is part of the lamp but is not included into the lamp body): not applicable

Only for limited mounting height of equal to or less than 750 mm above the ground: ~~YES~~ / NO <sup>(1)</sup>

Function(s) produced by an interdependent lamp forming part of an interdependent lamp system: not applicable

Front position lamp: ~~YES~~ / NO <sup>(1)</sup>

Rear position lamp: ~~YES~~ / NO <sup>(1)</sup>

Stop lamp: ~~YES~~ / NO <sup>(1)</sup>


10. Position of the approval mark: outer lens

11. Reasons (s) for extension (if applicable): not applicable

12. Approval GRANTED / ~~EXTENDED~~ / ~~REFUSED~~ / ~~WITHDRAWN~~: <sup>(1)</sup>

13. Place: BRISTOL

14. Date: 7 JUNE 2018

15. Signature:  D LAWLOR  
Chief Technical and Statutory Operations Officer
16. The list of documents deposited with the Administrative Service which has granted approval is annexed to this communication and may be obtained on request

Any Remarks: Component number(s): 0554921, 0554923

LED module: non-replaceable; 3455180

Rated voltage: 12 – 24V

Wattage: 3W

- (1) Strike out what does not apply.
- (2) For the purpose of this Regulation "being part of the lamp" means to be physically included in the lamp body or to be external, separated or not, but supplied by the lamp manufacturer as part of the lamp system. The functioning and installation conditions of these additional systems will be defined by special provisions.



Vehicle  
Certification  
Agency

THE UNITED KINGDOM VEHICLE APPROVAL AUTHORITY

APPROVAL NUMBER: E11\*50R00/20\*50008\*00

**INFORMATION PACKAGE CONTENTS**

**INDEX REVISION NUMBER: Not applicable**

**Conformity of Production (COP) Declaration    COP Confirmed**

<b>Assessment Method</b>	<b>ISO/TS Cert and Control Plans</b>	
<b>Date of Initial Clearance</b>	<b>Nov</b>	<b>2013</b>
<b>Date of Last Clearance</b>	<b>Jun</b>	<b>2017</b>

Total number of sheets: 03 (Three)

Reasons for Revision:       Not applicable

Revision Date  
&  
Office Stamp

UST398834






THE UNITED KINGDOM VEHICLE APPROVAL AUTHORITY

COMMUNICATION CONCERNING THE APPROVAL GRANTED <sup>(1)</sup>/ ~~APPROVAL EXTENDED <sup>(4)</sup>/~~  
~~APPROVAL REFUSED <sup>(4)</sup>/ APPROVAL WITHDRAWN <sup>(4)</sup>/ PRODUCTION DEFINITELY~~  
~~DISCONTINUED <sup>(4)</sup>~~ OF A TYPE OF HEADLAMP PURSUANT TO REGULATION NO. 113.01



Approval No: E11\*113R01/06\*50008\*00

1. Trade name or mark of the device: Speaker or 
2. Manufacturer's name for the type of device: Model 97
3. Manufacturer's name and address:  
  
J.W. Speaker Corporation  
N120 W19434 Freistadt Road  
P.O. Box 1011  
Germantown, WI 53022-8211  
U.S.A.
4. If applicable, name and address of manufacturer's representative: not applicable
5. Submitted for approval on: 20 March 2018
6. Technical service responsible for conducting approval tests: Vehicle Certification Agency
7. Date of report issued by that service: 28 March 2018
8. Number of report issued by that service: T113R-50008 00

## 9. Brief description: passing and driving beam

Category as described by the relevant marking <sup>(2)</sup>: WCR-DS PL

Number and category(ies) of filament lamp(s), if any: not applicable

Number and category(ies) of gas-discharge light source, if any: not applicable

Number and specific identification code(s) of LED modules and for each LED module statement whether it is replaceable or not: YES / ~~NO~~ <sup>(4)</sup>

LED Module: non-replaceable; 3455180

Number and specific identification code(s) of electronic light source control gear(s), if any: part of the lamp

Number and specific identification code(s) of additional lighting unit(s) and for each LED module a statement whether it is replaceable or not if any: not applicable

The determination of "cut-off" sharpness ~~YES~~ / NO <sup>(1)</sup>If yes, it was carried out at ~~10 m / 25 m~~ <sup>(4)</sup>

Trade name and identification number of separate ballast(s) or part(s) of ballast(s): not applicable

The passing beam light source may / ~~may not~~ <sup>(1)</sup> be lit simultaneously with the driving beam light source and/or another reciprocally incorporated headlamp.

The minimum bank angle(s) to satisfy the requirement of paragraph 6.2.8.1, if any: not applicable

9.1 Primary Driving Beam: YES / ~~NO~~ <sup>(4)</sup>Secondary Driving Beam: ~~YES~~ / NO <sup>(1)</sup>

The Secondary Driving Beam shall only be operated together with a passing beam or a primary driving beam.

## 10. Approval mark position: Outer Lens

## 11. Reason(s) for extension of approval: not applicable

12. Approval GRANTED / ~~EXTENDED/REFUSED/WITHDRAWN~~ <sup>(4)</sup>:

## 13. Place: BRISTOL

## 14. Date: 7 JUNE 2018

15. Signature:



D LAWLOR  
Chief Technical and Statutory Operations Officer

16. The list of documents deposited with the Administrative Service which has granted approval is annexed to this communication and may be obtained on request.

Any remarks: Component number(s): 0554921, 0554923

Maximum Luminous Intensity: 10

Class: D

Rated voltage: 12 -24V

Wattage: passing beam – 17.5W; driving beam – 21W

(1) Strike out which does not apply.

(2) Indicate the appropriate marking selected from the listed below:

C-AS,	C-BS,	R-BS,	CR-BS,	C/ -BS,	C/R-BS,
WC-CS,	C-BS PL,	R-BS PL,	CR-BS PL,	C/ -BS PL,	C/R-BS PL,
WC/-CS,	WC-DS,	WR-CS,	WR-DS,	WCR-CS,	WCR-DS,
WC-DS PL,	WC/-DS,	WC/R-CS,	WC/R-DS,	WC-CS PL,	
WC/-CS PL,	WR-CS PL,	WR-DS PL,	WCR-CS PL,	WCR-DS PL,	
WC+CS,	WC/-DS PL,	WC/R-CS PL,	WC/R-DS PL,		
WC+CS PL,	WC+DS,	WC+R-CS,	WC+R-DS,	C+BS,	C+R-BS,
WC-ES,	WC+DS PL,	WC+R-CS PL,	WC+R-DS PL,	C+BS PL,	C+R-BS PL,
WR-ES PL,	WR-ES,	WCR-ES,	WC/-ES,	WC/R-ES,	WC-ES PL,
WC+ES	WCR-ES PL,	WC/-ES PL,	WC/R-ES PL,		
	WC+R-ES,	WC+ES PL,	WC+R-ES PL,		



Vehicle  
Certification  
Agency

THE UNITED KINGDOM VEHICLE APPROVAL AUTHORITY

APPROVAL NUMBER: E11\*113R01/06\*50008\*00

**INFORMATION PACKAGE CONTENTS**

**INDEX REVISION NUMBER: Not applicable**

**Conformity of Production (COP) Declaration    COP Confirmed**

<b>Assessment Method</b>	<b>ISO/TS Cert and Control Plans</b>	
<b>Date of Initial Clearance</b>	<b>Nov</b>	<b>2013</b>
<b>Date of Last Clearance</b>	<b>Jun</b>	<b>2017</b>

Total number of sheets: 04 (Four)

Reasons for Revision:       Not applicable

Revision Date  
&  
Office Stamp

UST398834





APPROVAL OF A TYPE OF FRONT POSITION LAMPS, REAR POSITION LAMPS,  
STOP LAMPS, DIRECTION INDICATORS, AND REAR-REGISTRATION-PLATE  
ILLUMINATING DEVICES PURSUANT TO REGULATION NO 50.00

Approval Number Issued: 50008

Extension No. 00

CHANGES FROM THE ORIGINAL CERTIFICATION			
Date	Rev	Author's Initials	Changes
3/23/18	00	MJH	Initial release

Group Approval: Yes

If group approval, list Regulations included in the group approval: Reg 113, Reg 50

Trade name or mark of the device: Speaker

Manufacturer's name for the type of device: Model 97

Component(s) to be covered by approval: 0554921, 0554923

Approval mark position: Outer lens

The purpose or purposes for which the device submitted for approval is intended: Front position

Manufacturer's name and address:

J.W. Speaker Corporation  
N120 W19434 Freistadt Road  
P.O. Box 1011  
Germantown, WI 53022-8211 U.S.A.

If applicable, name and address of manufacturer's representative: N/A

Manufacturing Plant(s) Address

J.W. Speaker Corporation  
N120 W19434 Freistadt Road  
P.O. Box 1011  
Germantown, WI 53022-8211 U.S.A.

Manufacturer/Applicant Contact Person Responsible for Agreement: Mike Herre

Test Location:

J.W. Speaker Corporation  
N120 W19434 Freistadt Road  
P.O. Box 1011  
Germantown, WI 53022-8211 U.S.A.

Description of lamp

Type of lamp: Front position

Location: Center of headlight

Color of light: White

A brief technical description stating, in particular, with the exception of lamps with non-replaceable light sources:

- (a) the category or categories of filament lamp(s) prescribed; this filament lamp category shall be one of those contained in Regulation No. 37: NA
- (b) the light source module specific identification code. Non-replaceable; 3455180

Rated voltage and wattage: 12-24 VDC, Front position: 3W

Geometrical Conditions

The device may be installed on the vehicle with different inclinations of the reference axis in respect to the vehicle reference planes and to the ground or rotate around its reference axis. Indicate the different conditions of installation (or different positions): N/A

In the case of a rear registration plate lamp, that the device may be fitted in more than one or a field of positions in relation to the space to be occupied by the registration plate. Indicate the different conditions of installation (or different positions): N/A

## Electronic Light Source Gear

Application of an electronic light source control gear/variable intensity control:

- (a) being part of the lamp: Yes
- (b) being not part of the lamp: No

Input voltage(s) supplied by an electronic light source control gear/variable intensity control: NA

Electronic light source control gear/variable intensity control manufacturer and identification number (when the light source control gear is part of the lamp but is not included into the lamp body): NA

## Lamp material List

Optic Holder Material: Polycarbonate

Housing Material: Cast aluminum

Outer Lens Material: Clear Polycarbonate with Redspot UVT-200 Hardcoating and FSI

## AF-6114 Anti-fog coating

Solid Optical Lens Materials: Clear PMMA

The materials making up the lenses and coatings, if any, shall be accompanied by the test report of the characteristics of these materials and coatings if they have already been tested.

Attach drawings in sufficient detail to permit identification of the type of device and showing in what geometrical positions(s) the device may be mounted on the vehicle. The axis of observation to be taken as the axis of reference in the tests (horizontal angle  $H =$ , vertical angle  $V =$ ) and the point to be taken as the centre of reference in the said tests; the drawing shall show the position intended for the approval mark and eventually the additional symbols in relation to the circle of the approval mark.

**APPROVAL OF A TYPE OF HEADLAMP PURSUANT TO  
REGULATION NO 113.01**

Approval Number Issued: 5008

Extension No. 00

CHANGES FROM THE ORIGINAL CERTIFICATION		
Date	Rev	Changes
3/23/18	0	Initial Approval

Group Approval: Yes

If group approval, list Regulations included in the group approval: Reg 113, Reg 50 (front Position)

Trade name or mark of the device: Speaker

Manufacturer's name for the type of device: Model 97

Component(s) to be covered by approval: 0554921, 0554923

Manufacturer's name and address:

J.W. Speaker Corporation  
N120 W19434 Freistadt Road  
P.O. Box 1011  
Germantown, WI 53022-8211 U.S.A.

If applicable, name and address of manufacturer's representative: N/A

Manufacturing Plant(s) Address

J.W. Speaker Corporation  
N120 W19434 Freistadt Road

Application For Approval To Regulation 113

P.O. Box 1011  
Germantown, WI 53022-8211 U.S.A.

Manufacturer/Applicant Contact Person Responsible for Agreement: Mike Herre

Test Location:

J.W. Speaker Corporation  
N120 W19434 Freistadt Road  
P.O. Box 1011  
Germantown, WI 53022-8211 U.S.A.

Description of Headlamp

The kind of beam produced (passing beam, driving beam or both): both

Headlamp is equipped with an adjustable reflector: No

The height and mounting position(s) of the headlamp in relation to the ground:

A brief technical description including, in the case where headlamps are used to produce bend lighting: NA

Class of headlamp: D

Rated voltage and wattage: 12-24 VDC, Driving Beam: 21 W, Passing Beam: 17.5W

Number and category(s) of filament lamp(s) as listed in Regulation No. 37 and its series of amendments:

Passing: N/A

Driving: N/A

Number and specific identification code(s) of LED module(s)

Passing: One 5-die LED array

Driving: One 3-die LED array and one 5-die LED array

A brief technical specification of the LED module(s) (include failure modes):

The LED module specific identification code: non-replaceable; 3455180

Number and specific identification code(s) of electronic light source control gear(s): part of the lamp

For electronic light source control gear, information on the electrical interface necessary for approval testing: N/A

The category of gas-discharge light source as listed in Regulation No. 99, if any: N/A

For gas discharge lamps, the make and type of the ballast(s); N/A

Application For Approval To Regulation 113



Manufacturer's declared maximum luminous intensity: 10

#### Headlamp material List

Optic Holder Material: Polycarbonate

Housing Material: Cast aluminum

Outer Lens Material: Clear Polycarbonate with Redspot UVT-200 Hardcoating and FSI AF-6114

#### Anti-fog coating

Solid Optical Lens Materials: Clear PMMA

The materials making up the lenses and coatings, if any, shall be accompanied by the test report of the characteristics of these materials and coatings if they have already been tested.

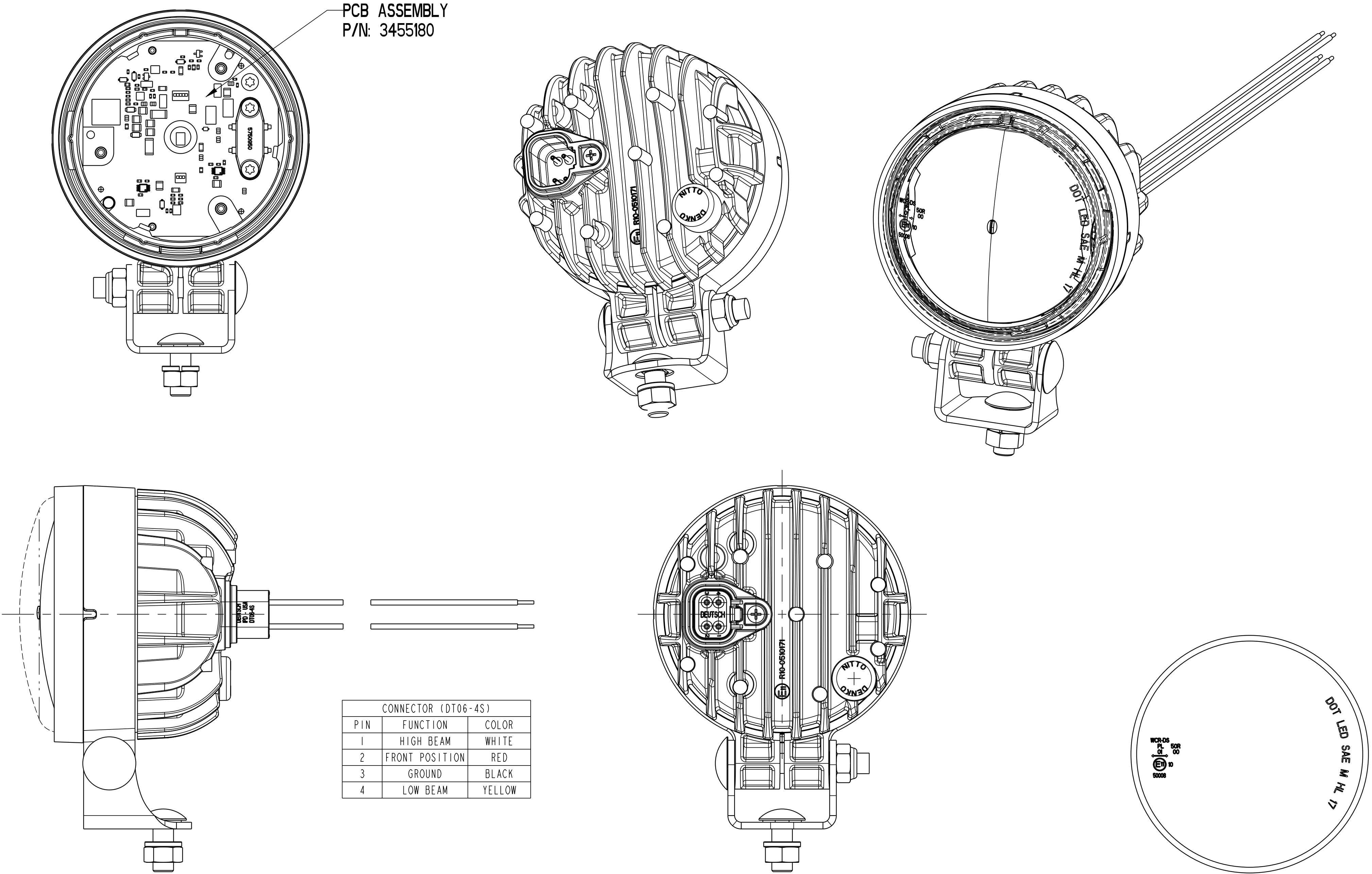
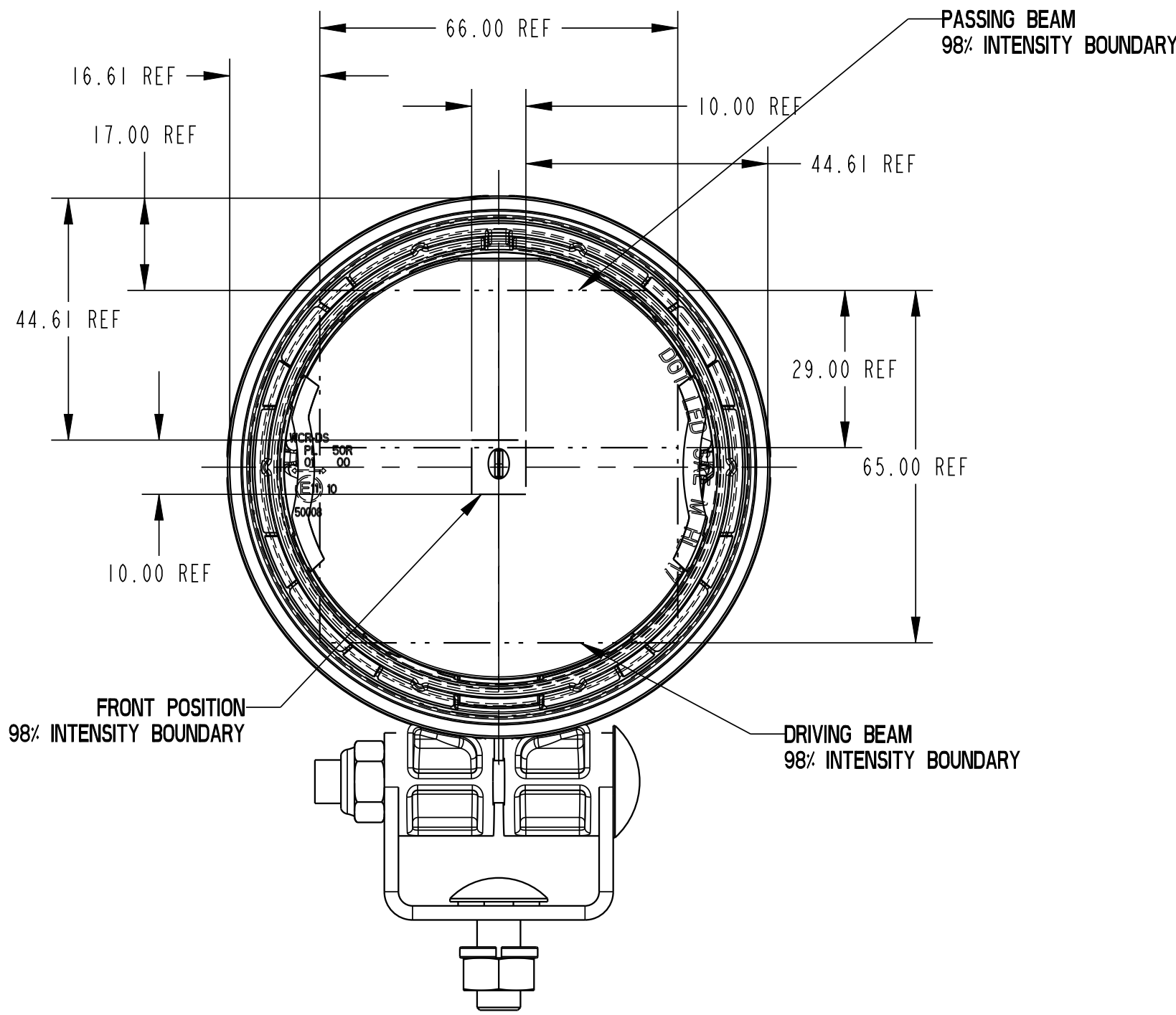
Approval mark position: Outer Lens

Attach drawings in sufficient detail to permit identification of the type and representing a frontal view of the headlamp, with details of lens ribbing if any, and the cross-section. The drawings shall indicate the space(s) reserved for the approval mark and in case of LED module(s) also the space reserved for the specific identification code(s) of the module(s). If the headlamp is equipped with an adjustable reflector, an indication of the mounting position(s) of the headlamp in relation to the ground and the longitudinal median plane of the vehicle, if the headlamp is for use in that (those) position(s) only;



RESTRICTED CONFIDENTIAL DOCUMENT  
THIS DRAWING AND ALL INFORMATION SHOWN HEREON ARE THE EXCLUSIVE PROPERTY OF J.W. SPEAKER AND ARE SUBMITTED ONLY ON A CONFIDENTIAL BASIS. THE RECIPIENT AGREES NOT TO REPRODUCE THE DRAWING, TO RETURN IT UPON REQUEST, AND THAT NO DISCLOSURE OF THE DRAWING OR THE INFORMATION SHOWN HEREON WILL BE MADE TO A THIRD PARTY WITHOUT THE PRIOR WRITTEN CONSENT OF J.W. SPEAKER.

PCB ASSEMBLY  
P/N: 3455180



CONNECTOR (DT06-4S)		
PIN	FUNCTION	COLOR
1	HIGH BEAM	WHITE
2	FRONT POSITION	RED
3	GROUND	BLACK
4	LOW BEAM	YELLOW

VIEW SHOWING DOT / ECE MARKINGS

- NOTES
- PHOTOMETRY:
    - ECE REG 113 (DRIVING/PASSING BEAM)
    - ECE REG 50 (FRONT POSITION)
    - FMVSS 108 TABLE XX (DRIVING/PASSING BEAM)
  - LAMP SEALING RATING: IEC 60529 IP69K
  - ELECTRICAL SPECIFICATIONS
    - VOLTAGE RANGE: 12-24VDC
    - CURRENT DRAW:  
DRIVING BEAM: 15A AT 12V  
PASSING BEAM: 18A AT 12V  
FRONT POSITION: 0.1A AT 12V
  - JWS PRODUCT STANDARD
    - ON ROAD
  - MATING CONNECTOR: DEUTSCH DT06-4S

2	0554923	97 - 12/24V, B1-LED, DOT/ECE 113, KIT
1	0554921	97 - 12/24V, B1-LED, DOT/ECE 113
ITEM NO.	PART NUMBER	DESCRIPTION
PART NUMBER	-METRIC - UNLESS OTHERWISE SPECIFIED ALL DIMENSIONS ARE IN MILLIMETERS	THIRD ANGLE PROJECTION
DIMENSIONING AND TOLERANCING PER ASME Y14.5-2009 & ASME Y14.41-2003	DATE: 15-Mar-18 DRAWN BY: R SENTIERI	<b>J.W. SPEAKER</b> I.W. SPEAKER CORPORATION GERMANTOWN, WI MATERIAL: MANUFACTURED TITLE: 97-12/24V, B1-LED, DOT/ECE REG113 DWG. NO. D 0554920
SHEET 3 OF 3	TOOL NO.	REV. A