

Product Description:

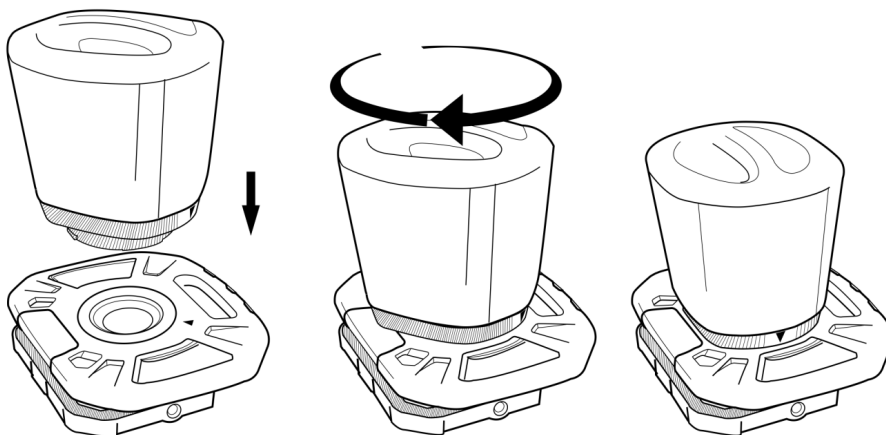
- 60W COB corded flood light
- Dimming function to provide 600lumen to 6000lumen
- 2 power outlets on the back of lamp
- 90° rotation bracket, with 3 M8 holes to mount on the tripod
- Foam housing with integrated handle for better hand grip and housing protection
- Unique design of the detachable 360° shield(optional), to easy swap from flood light to moon light
- Press the button and hold on to turn on/off the light, 50% brightness for the initial output.
- Programmable switch to support dimming 10%-25%-50%-75%-100%, clockwise to turn up, anticlockwise to turn down, the light will blink when on highest and lowest level to remind.

Specifications:

Brightness without shield:	Approximately 600~6000 lumen
Brightness with shield	Approximately 480~4800 lumen
Power cable:	5meter 3*1.5sqmm H07RN cable
Color temperature:	5500~6500K
CRI:	>70Ra
IK	07
IP	54
Working temperature:	-10~40℃
Storage temperature:	-20~50℃

Warning:

- Wear safety goggles(User and bystander)
- Avoid looking directly into the beam
- Do not use the lamp near open flames
- Do not cover the lens during the operating to prevent against overheating
- Do not contaminate the lens with organic solvents
- Take care to position the light and stand in a careful manner, to ensure the light is properly supported by the stand
- When using this light at a height of 3 meter or greater, take extra precautions to ensure safe use. Take additional precautions to prevent falling objects from causing harm to bystanders and nearby equipment.

Installation Description of Detachable Shield for Flood Lights

Step 1. Target the Triangle mark on the shield with the one on the lamp.

Step 2. Clockwise rotate the shield to fix them together.

Step 3. Done as the 3rd picture.

