

# Steckverbinder A

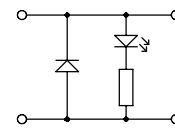
## Bauform A mit Beschaltung

DIN 43 650 / EN 175301 - 803

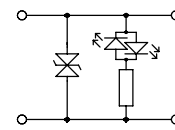
## Connector A

### Form A with circuit

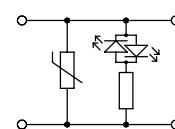
Kontaktabstand Contact spacing	18 mm
Nennspannung Rated voltage	24 V
Dauerstrom Operating current	10 A
Max. Strom Max. current	16 A
Max. Leiterquerschnitt Max. wire gauge	1,5 mm <sup>2</sup>
Kabelverschraubung Cable gland	PG9 / M 16
Kabeldurchmesser Cable diameter	6 - 8 mm
Schutzart Protection class	IP 65 (EN 60529)
Gehäusematerial Housing material	PA
Kontaktmaterial Contact material	Cu Zn (Ag)
Dichtung (Profil=1 / Flach=2)* Gasket (profil = 1 / flat = 2)*	thermoplastisches Gummi thermoplastic rubber
Befestigungsschraube Screw	M 3
Temperaturbereich Temperature range	-30° C ... +90° C



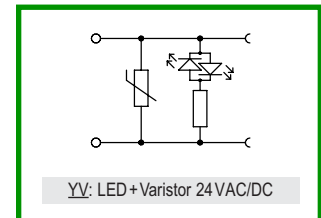
YD: LED+Diode 24VDC



YT: LED+Z-Diode 24VAC/DC



YV: LED+Varistor 24VAC/DC



Farbe Colour	Polzahl Contacts	Artikel Nr. Part No.	Artikel Nr. Part No.	Besonderheit Special Feature
		PG 9	M16	
transparent	2+PE	GDA3YD90T21	GDA3YDM0T21	LED + Diode
transparent	2+PE	GDA3YT90T21	GDA3YTM0T21	LED + Z-Diode
transparent	2+PE	<b>GDA3YV90T21</b> <b>(702042)</b>	GDA3YVM0T21	LED + Varistor