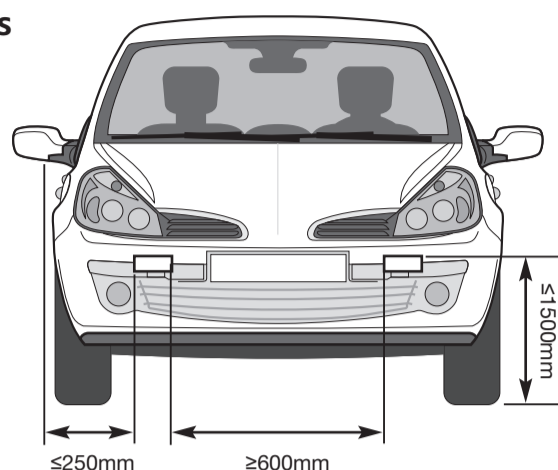




## Fitting Instructions for Ring Automotive Lyra Daytime Running Lamps (BRL0398)

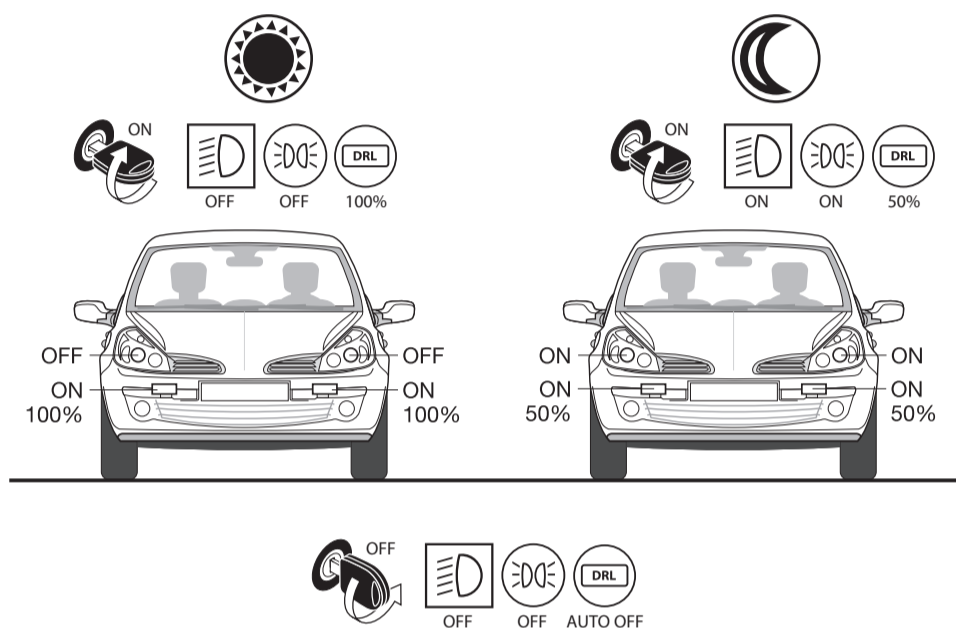
Fit your DRLs in 3 easy steps

1. Prepare your vehicle
2. Mount the lamps
3. Wire the lamps

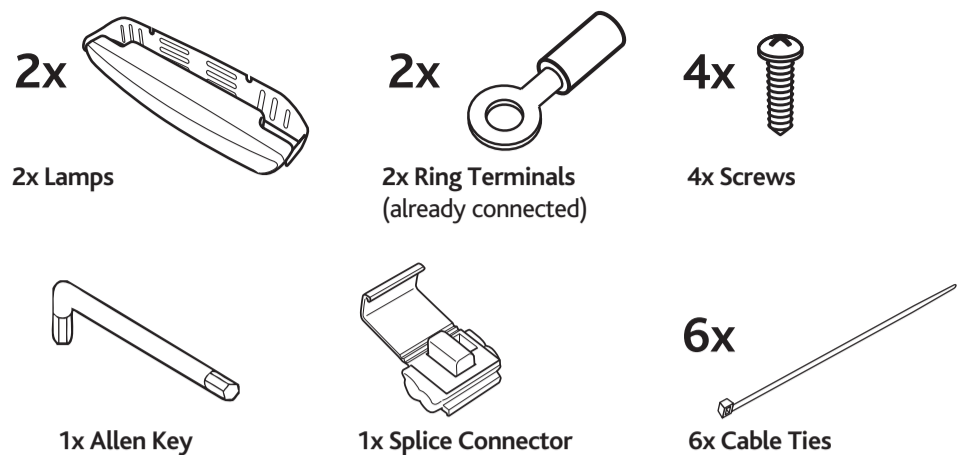


ECE Reg 87 ✓  
ECE R7 ✓

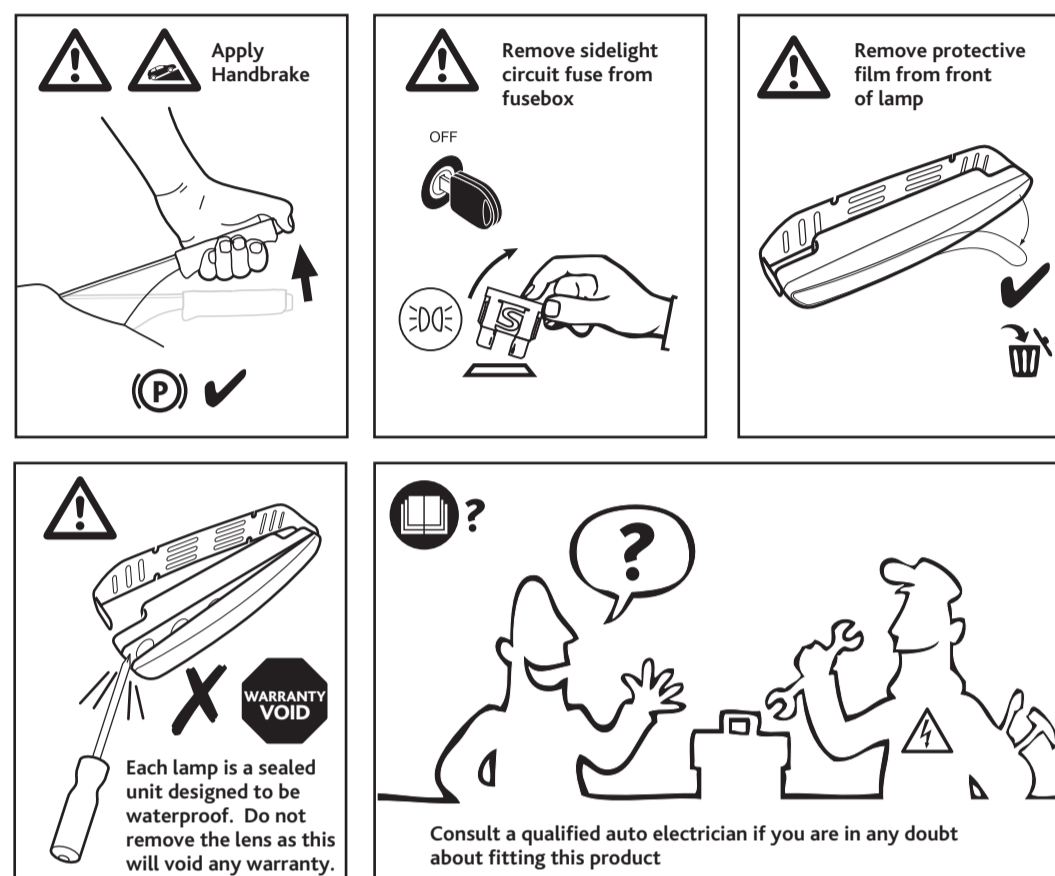
## FUNCTIONS



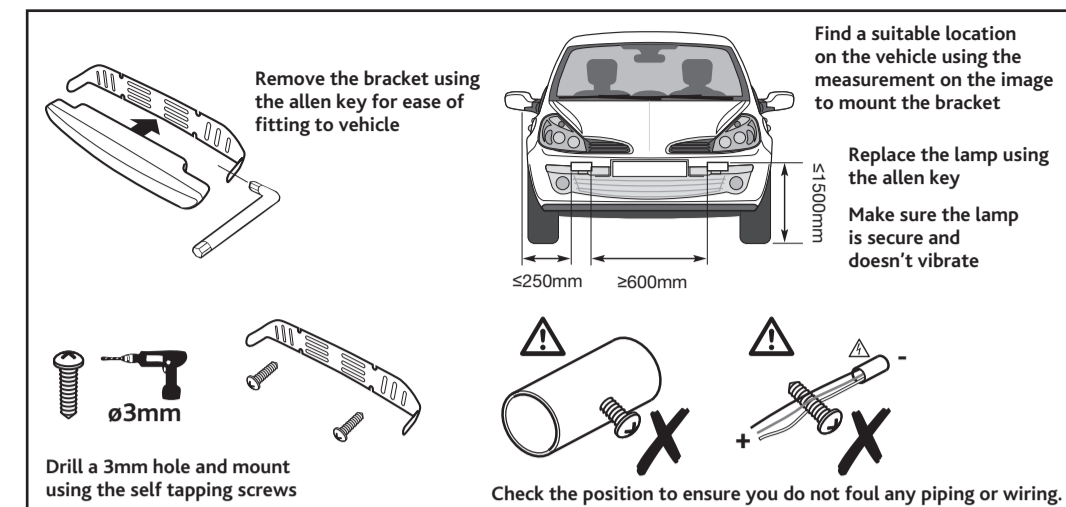
## EQUIPMENT INCLUDED



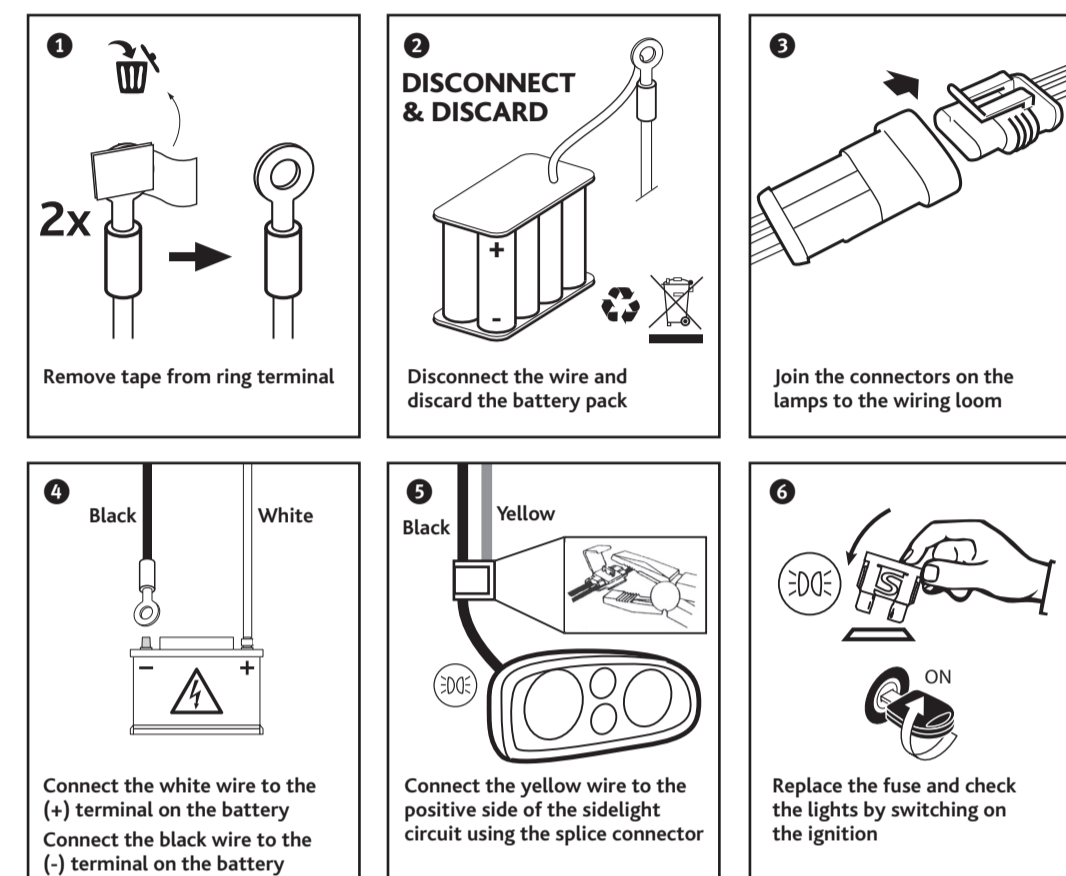
## STEP 1: PREPARING YOUR VEHICLE



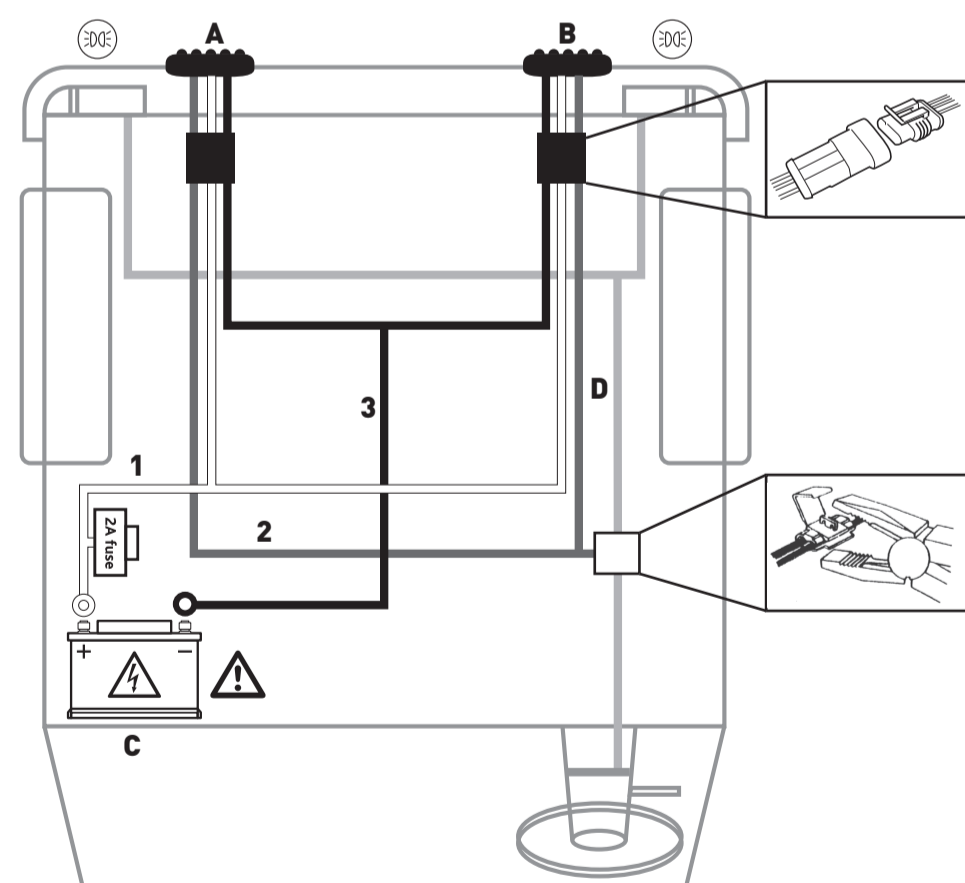
## STEP 2: MOUNTING THE LAMPS



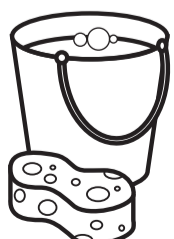
## STEP 3: WIRING THE LAMPS



## STEP 3: WIRING THE LAMPS



## AFTERCARE



Wash lamps with a mild solution of soap and water to remove dirt etc. Do not use harsh or abrasive cleaners.

## STEP 3: WIRING THE LAMPS

<b>(GB)</b>	<b>(E)</b>	<b>(NL)</b>
A. Lampe B. Lamp C. Vehicle Battery D. Vehicle Side / Position Light Circuit	A. Lámpara B. Lámpara C. Batería para vehículos D. Circuito de luces laterales del vehículo	A. Lamp B. Lamp C. Accu D. Zijlichtcircuit
1. White wire 2. Yellow wire 3. Black wire	1. Cable blanco 2. Cable amarillo 3. Cable negro	1. Witte draad 2. Gele draad 3. Zwarte draad
<b>(F)</b>	<b>(DK)</b>	<b>(FI)</b>
A. Lampe B. Lampe C. Batterie véhicule D. Circuit d'éclairage latéral du véhicule	A. Lampe B. Lampe C. Bilbatteri D. Kredsløb til bilens parkeringslys	A. Lamppu B. Lamppu C. Ajoneuvon akku D. Ajoneuvon seisontavalon virtapiiri
1. Fil blanc 2. Fil jaune 3. Fil noir	1. Hvid ledning 2. Gul ledning 3. Sort ledning	1. Valkoinen johto 2. Keltainen johto 3. Musta johto
<b>(D)</b>	<b>(P)</b>	<b>(PL)</b>
A. Lampe B. Lampe C. Fahrzeugbatterie D. Stromkreis der Fahrzeug-Seitenleuchte	A. Lâmpada B. Lâmpada C. Bateria do veículo D. Circuito das luzes laterais do veículo	A. Lampa B. Lampa C. Akumulator pojazdu D. Obwód świateł postojowych pojazdu
1. Weiße Leitung 2. Gelbe Leitung 3. Schwarze Leitung	1. Fio branco 2. Fio amarelo 3. Fio preto	1. Biały przewód 2. Żółty przewód 3. Czarny przewód
<b>(I)</b>	<b>(S)</b>	<b>(CZ)</b>
A. Lampada B. Lampada C. Batteria veicolo D. Circuito luce laterale veicolo	A. Lampa B. Lampa C. Fordonsbatteri D. Krettschema för fordonets sidolampor	A. Světlo B. Světlo C. Akumulátor vozu D. Obvod obrysových světel
1. Cavo bianco 2. Cavo giallo 3. Cavo nero	1. Vit ledning 2. Gul ledning	1. Bílý vodič 2. Žlutý vodič



## Fitting Instructions for Ring Automotive Lyra Daytime Running Lamps (BRL0398)

- (F)** Instructions de montage des éclairages de jour Lyra pour véhicules automobiles (BRL0398)
- (D)** Einbauanleitung für Ring Automotive Tagfahrlicht (BRL0398)
- (I)** Istruzioni per l'applicazione di lampade da giorno Lyra Automotive Ring (BRL0398)
- (E)** Instrucciones de colocación de las luces de circulación diurnas Ring Automotive Lyra (BRL0398)
- (DK)** Monteringsvejledning for Ring Automotive Lyra Kørelsygter (BRL0398)
- (P)** Instruções de Instalação das Lâmpadas de Mínimos Ring Automotive Lyra (BRL0398)
- (S)** Monteringsinstruktioner för strålkastarlampor Ring Automotive Lyra (BRL0398)
- (FI)** Pyöreiden auton huomiovalojen asennusohjeet (BRL0398)
- (NL)** Montage-aanwijzingen voor Lyra dagrijverlichting van Ring Automotive (BRL0398)
- (PL)** Instrukcja montażu pierścieniowych lamp dziennych Lyra do samochodów ( BRL0398)
- (CZ)** Pokyny k montáži denních světel Ring Automotive Lyra ( BRL0398)



Ring Automotive Limited,  
Gelder Road, Leeds, England LS12 6NA

UK Sales: +44 (0)113 213 7389

+44 (0)113 231 0266

www.ringautomotive.co.uk

Export Sales: +44 (0)113 213 7309

autosales@ringautomotive.co.uk