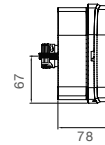
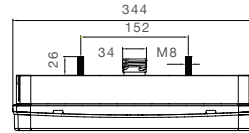
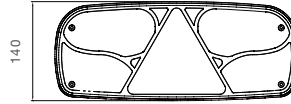




**ECOPOINT I** mit Dreieck  
with triangle

ADR  
Zone 2

IP 54



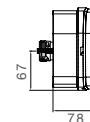
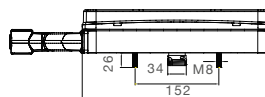
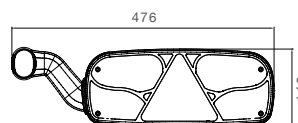
Blinklicht Direction indicator	Rücklicht Tail light	Bremslicht Stop light	Nebelschlusslicht Fog light
Rückfahrlicht Reverse light	Dreieckrückstrahler Triangle reflector		

BEST. NR	PART NO		←	→				ZUSATZ ADD ON	ANSCHLUSS CONNECTOR
25-2200-001	1/15	●				24V			7 pol. ASS2 7 pin ASS2 
25-2200-701	1/15	●				24V			7 pol. ASS2 7 pin ASS2 
25-2201-001	1/15	●				24V			7 pol. ASS2 7 pin ASS2 
25-2600-001	1/15		●			24V			7 pol. ASS2 7 pin ASS2 
25-2600-701	1/15		●			24V			7 pol. ASS2 7 pin ASS2 
25-2601-001	1/15		●			24V			7 pol. ASS2 7 pin ASS2 

ECOPOINT I mit Dreieck  
with triangle

ADR Zone 2

IP 54



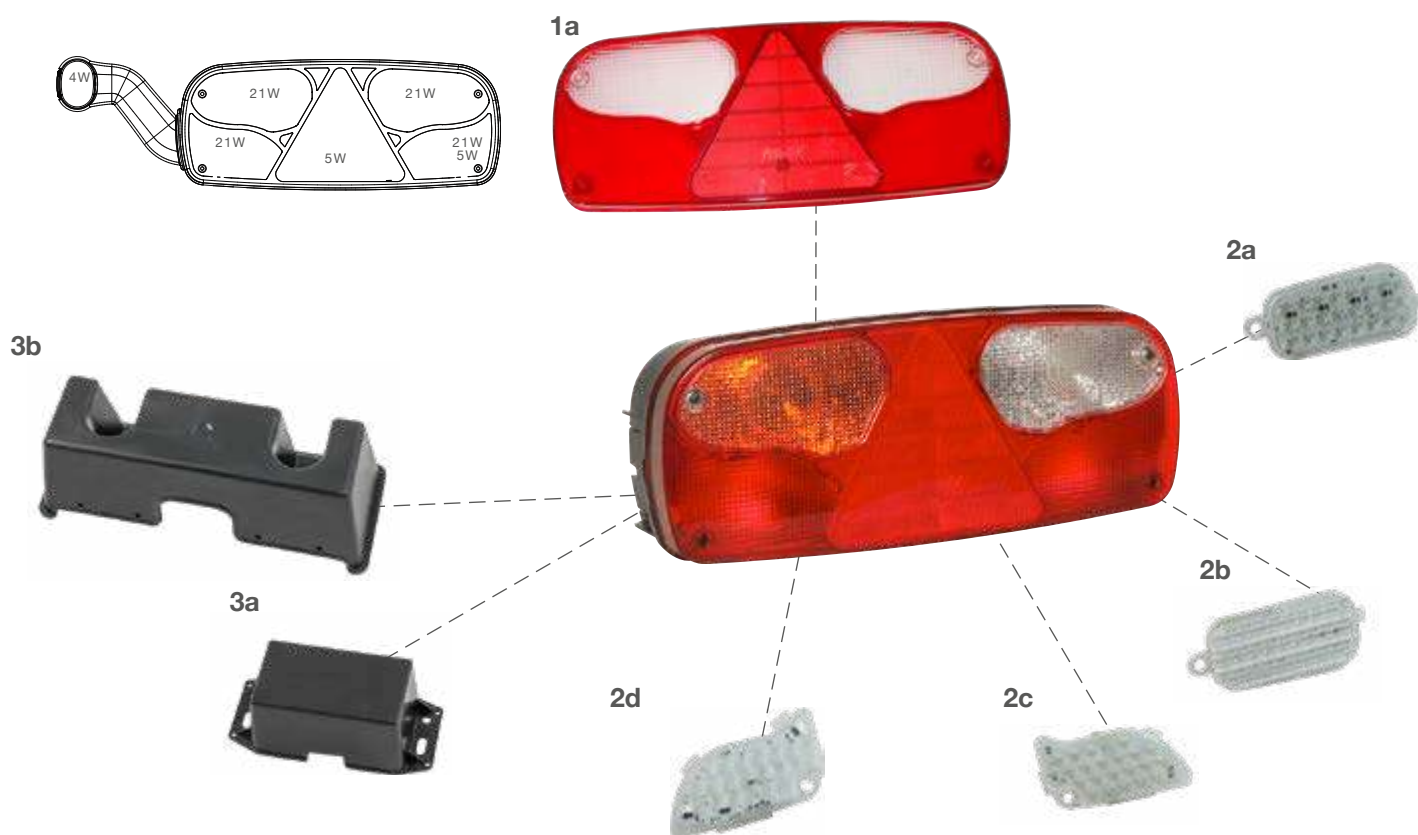
Blinklicht Direction indicator	Rücklicht Tail light	Bremslicht Stop light	Nebelschlusslicht Fog light
Rückfahrlicht Reverse light	Dreieckrückstrahler Triangle reflector		

BEST. NR	PART NO							ZUSATZ ADD ON	ANSCHLUSS CONNECTOR
25-2210-001	1/8	●			24V			7 pol. ASS2 7 pin ASS2	
25-2210-701	1/8	●			24V			7 pol. ASS2 7 pin ASS2	
25-2211-001	1/8	●			24V			7 pol. ASS2 7 pin ASS2	
25-2610-001	1/8		●		24V			7 pol. ASS2 7 pin ASS2	
25-2610-701	1/8		●		24V			7 pol. ASS2 7 pin ASS2	
25-2611-001	1/8		●		24V			7 pol. ASS2 7 pin ASS2	



ECOPOINT I mit Dreieck  
with triangle

ZUBEHÖR / ACCESSORIES



**1** **Lichtscheibe | lens**  
links / rechts  
left / right..... 18-8522-002

**2** **LED Einsätze | LED inserts**  
(a) Blinklicht links 24V  
direction indicator left 24V  
..... 12-1522-014   
Blinklicht rechts 24V  
direction indicator right 24V  
..... 12-1526-014   
(b) Rückfahrlicht links 24V  
reverse left 24V..... 12-1522-034   
Rückfahrlicht rechts 24V  
reverse right 24V..... 12-1526-034   
(c) Nebelschlusslicht links 24V  
fog left 24V..... 12-1522-024   
Nebelschlusslicht rechts 24V  
fog right 24V ..... 12-1526-024

(d) Rücklicht und Bremslicht links 24V  
tail light and stop light left 24V  
..... 12-1522-004   
Rücklicht und Bremslicht rechts 24V  
tail light and stop light right 24V  
..... 12-1526-004

**3** **Schutzhaube | protection cap**  
(a) klein  
small ..... 15-5270-004   
(b) groß  
big ..... 15-5276-004



ECOPOINT I mit Dreieck  
with triangle

ZUBEHÖR / ACCESSORIES



**4** Umrissarm Glühlampe | outline marker bulb

- links  
left..... 31-3608-014
- rechts  
right ..... 31-3608-004

**5** Lichtscheibe Umrissarm | lens outline marker

- ..... 18-8136-004

**6** Umrissarm LED | outline marker LED

- links  
left..... 31-3305-174
- rechts  
right ..... 31-3306-174

**7** ASS1 & ASS2 Verbinder |  
ASS1 & ASS2 connector

- 7 pol. weiblich  
7 pin female ..... 13-5626-631

**8** ASS3 Verbinder | ASS3 connector

- (a) 17 pol. weiblich  
17 pin female ..... 13-1722-001
- (b) 17 pol. männlich  
17 pin male ..... 13-1732-001

**Glühlampe | bulb**

- 24V 21W / 5W ..... 16-6322-037
- 24V 21W ..... 16-6321-037
- 24V 5W ..... 16-6305-027
- 24V 4W ..... 16-6304-027