

# BLACKTIPS

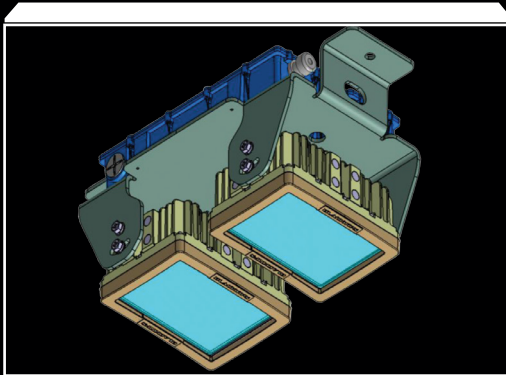
Crane Lighting Solution



# Blacktips LED Crane Lighting Solution



Blacktips crane solutions offer the most flexible upgrades, retrofit and new parking lot design. The low profile light heads offer low wind loads and can also be incorporated into existing architectural light heads reducing overall project costs. Custom Engineered mounting, beam pattern, beam color and fixture color make for a perfect match for any application while reducing energy and environmental footprints.



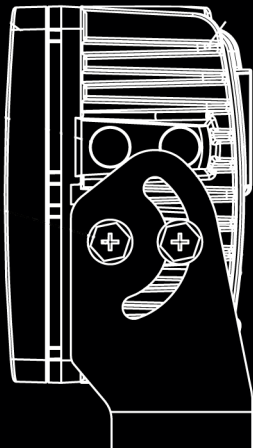
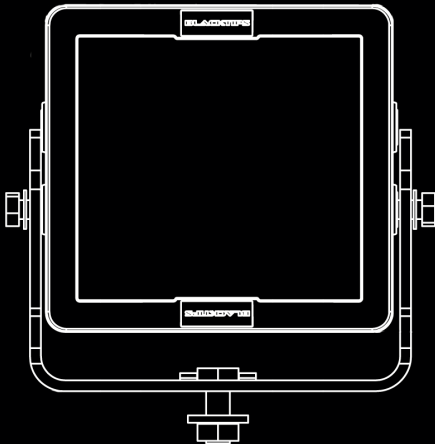
BLC072025H

BLACK TIPS LIGHT DUAL FIXTURE HANGING MOUNT FOR 20 LED, 140, 25° NARROW BEAM



BLB072025

BLACK TIPS LIGHT BLACK HOUSING, WITH 20 LED, 140 W, 25° NARROW BEAM



## Mechanical Information

|                 |          |         |
|-----------------|----------|---------|
| Fixture Weight  |          |         |
| BLB0720XX       | 9.92 Lbs | 4.5 Kg  |
| Shipping Weight |          |         |
| BLB0720XX       | 14 Lbs   | 6.35 Kg |

## Electrical Specifications

|                     |                           |
|---------------------|---------------------------|
| Operating Voltage   | 9-32V DC                  |
| Operating Temp      | -40 Celsius - +85 Celsius |
| Vibration Rating    | 21.2 G                    |
| Luminous Efficacy   | 89.7 Lm/W                 |
| Total Luminous Flux | 17,600 Lm                 |
| Fixture Wattage     | 140 W                     |
| IP Rating           | IP69K                     |

## Construction

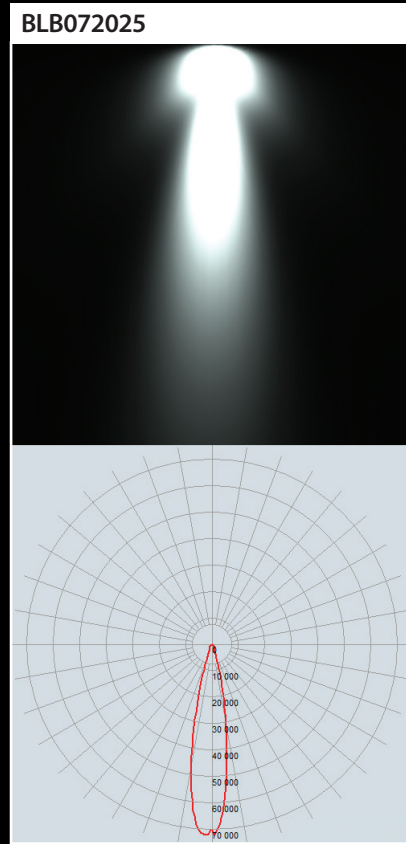
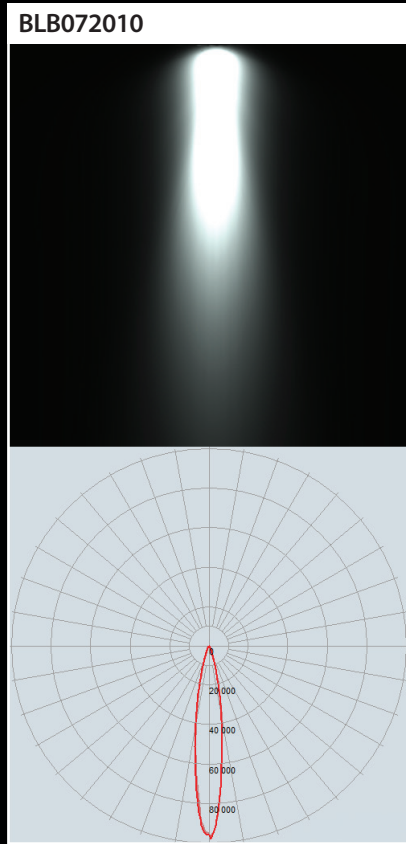
|                       |                   |
|-----------------------|-------------------|
| Housing               | Die-Cast Aluminum |
| Lens                  | Polycarbonate     |
| Environmental Coating | Interpon 810      |

## Photometric Information

|               |             |
|---------------|-------------|
| CRI Typical   | 80+         |
| CCT Standard  | 5,700K      |
| Available CCT | 2700K-8300K |

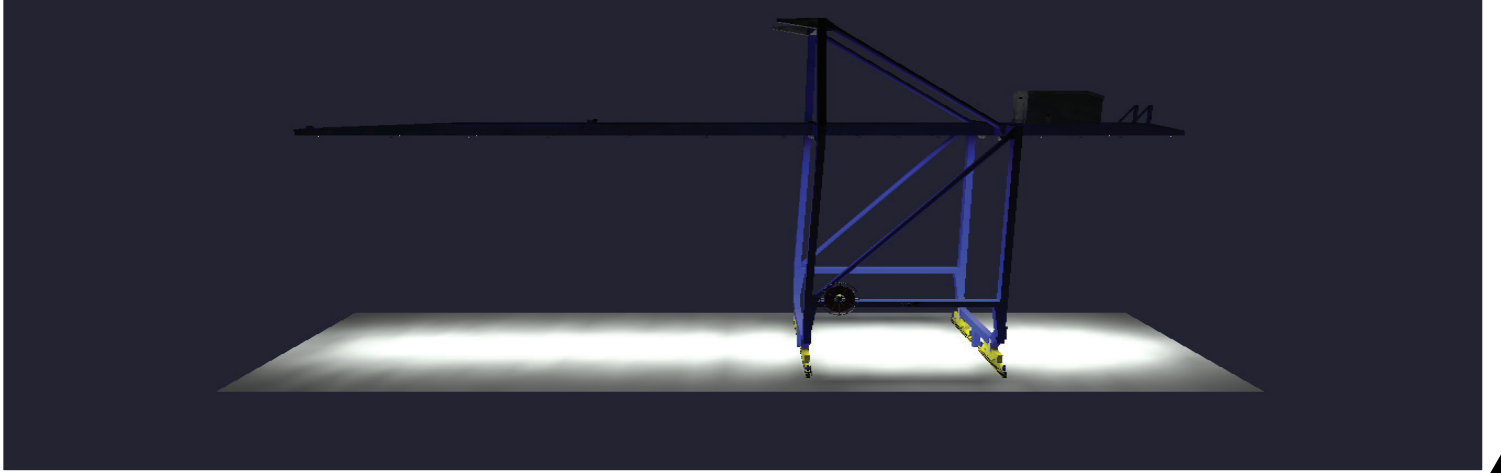
# Blacktips LED Crane Lighting Solution

| Part Number | Voltage  | Fixture Lumens | Watt | Color Temp. |
|-------------|----------|----------------|------|-------------|
| BLB072010   | 9-32V DC | 17,600         | 140  | 5,700k      |
| BLB072010   | 9-32V DC | 17,600         | 140  | 5,700k      |

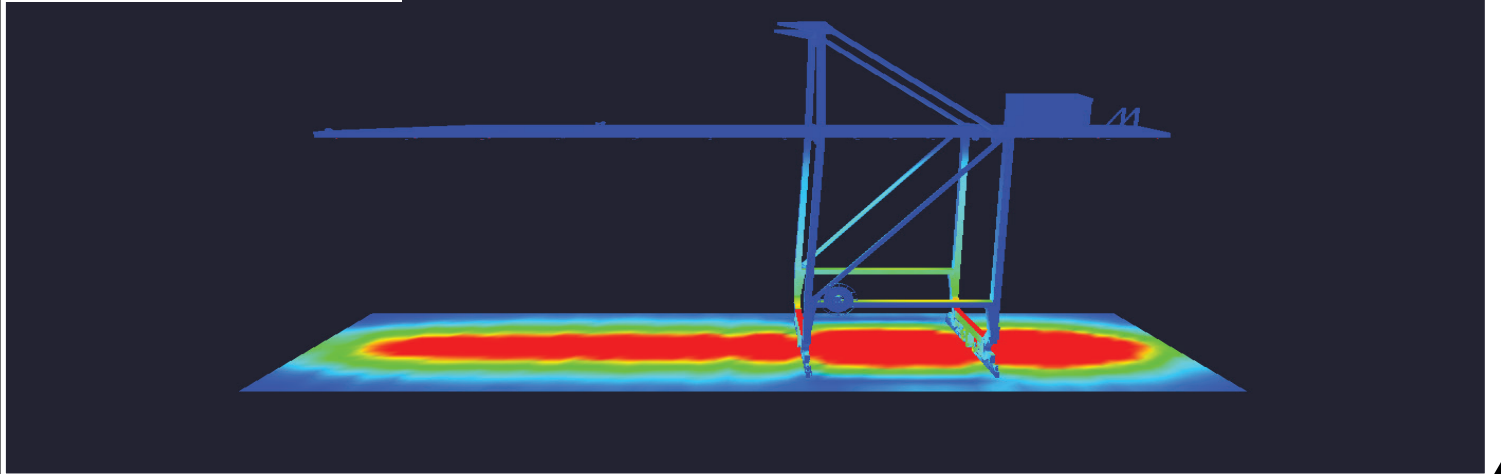


# Blacktips LED Crane Lighting Solution

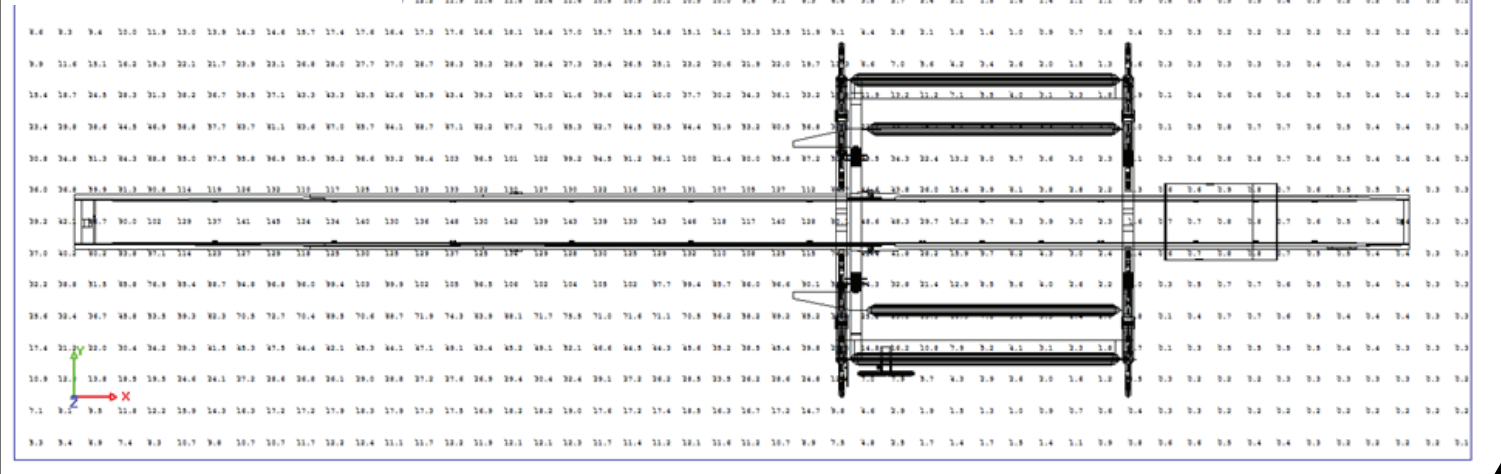
Simulation Rendering



Pseudo Rendering



Lux Plot Rendering



Blacktips offers a comprehensive light analysis of the desired facility. We will start with something as simple as dimensions and create a 3d rendering. Once that is complete we will place in our fixtures into the exact same locations or desired locations and be able to accurately create the required light on the effective work area. Once complete a comprehensive report, quotation and ROI will be sent for review.