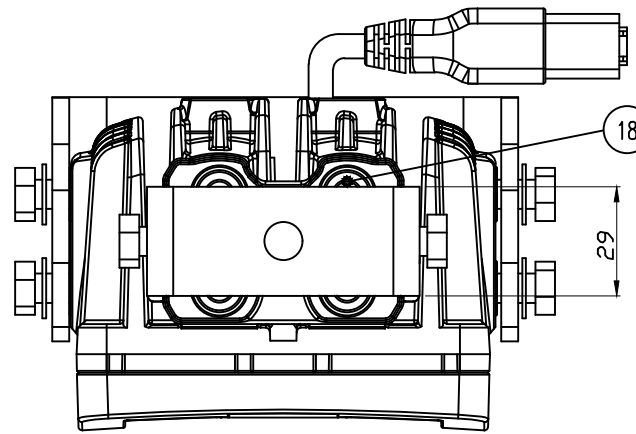


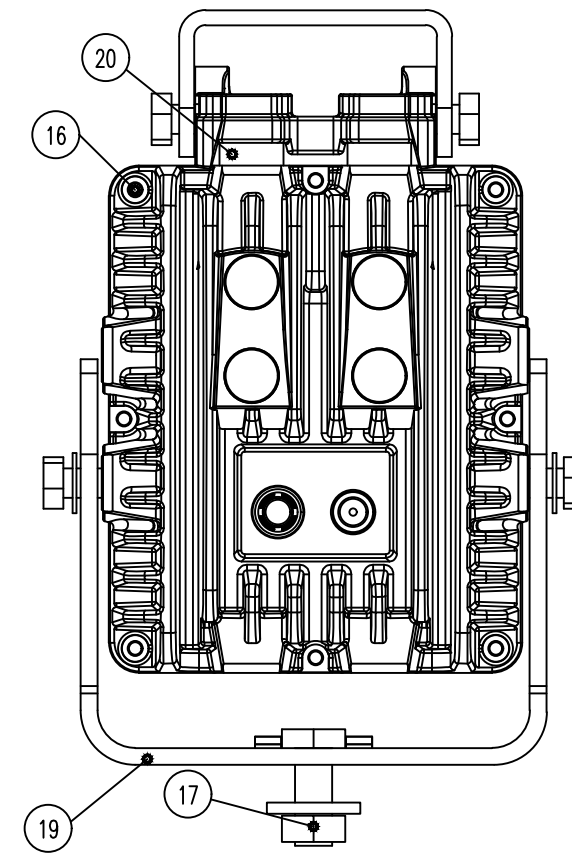
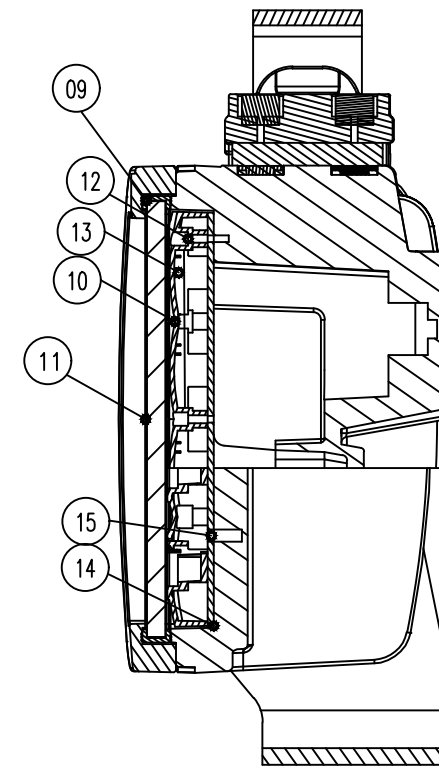
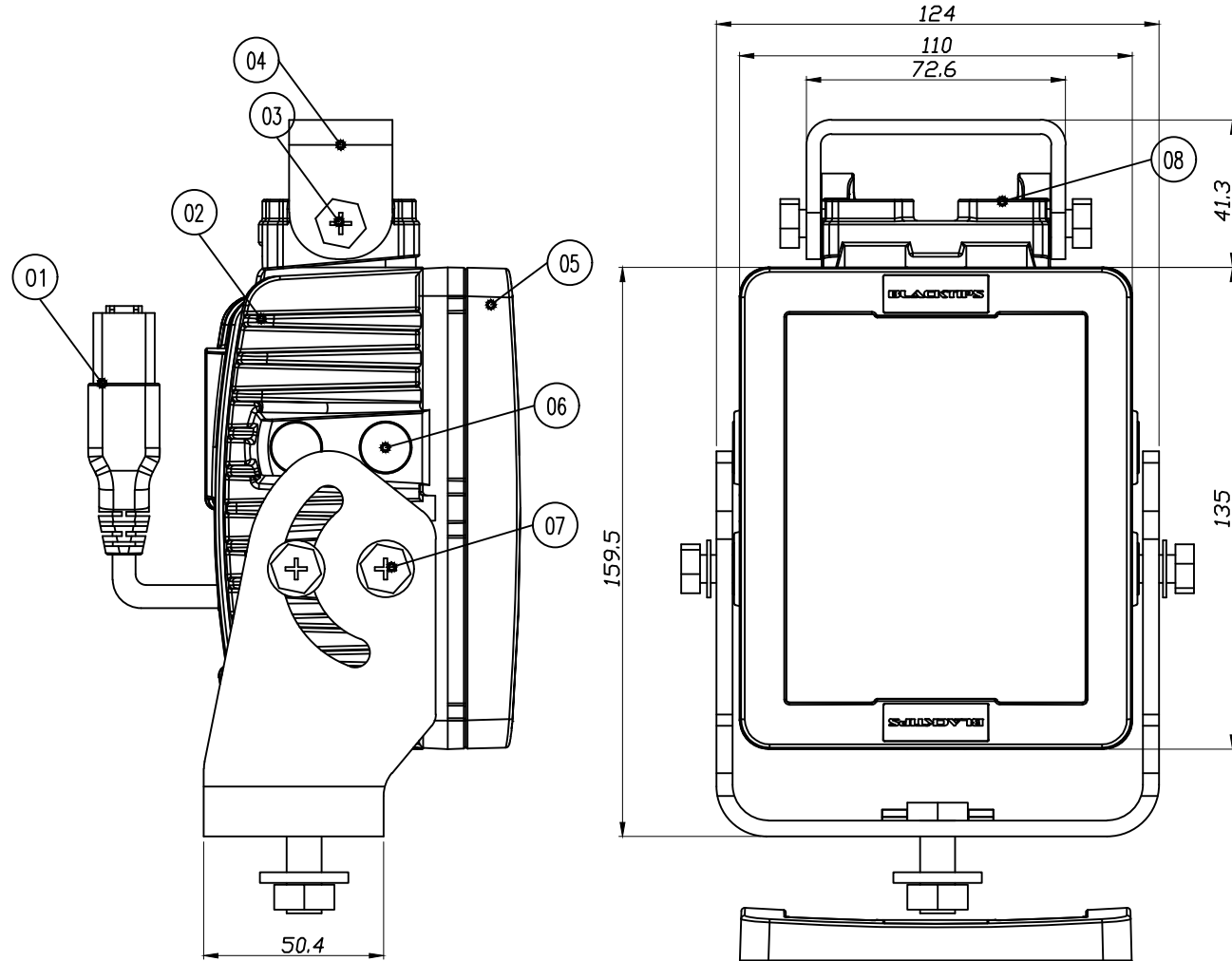
[SPECIFICATION]

1. OPERATING VOLTAGE : DC 9V ~ 32V.
2. WATTAGE : 84W
3. LED : XP-L (CREE)
4. LUMINOUS FLUX : 6697(lm)
5. LENS : ACRYL
6. WEIGHT : 2250g
7. VIBRATION : 21.2 (Grms)
8. WEATHER PROOF & DUST RESISTANCE
9. BEAM ANGLE : 25, 40, 60, 90, 30x65(Elliptical)
10. OPERATING TEMPERATURE : -40°C ~ 85°C
11. LIFE TIME : 50,000 (Hr)
12. IP RATING : IP68/IP69K

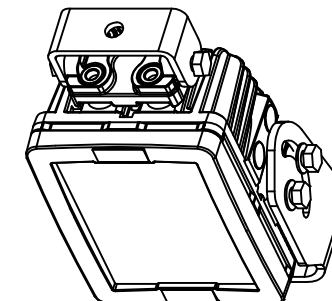


NO.	PART NO.	DESCRIPTION	Q'TY
01	CONNECTOR ASSY	RECEPTACLE: DT04-2P-E004	1
02	BODY	ALDC10(AD-BLK COATING)	1
03	BOLT	HEX(+)/SUS304/M8X12(SAMS)/NYLOK	2
04	BODY BRACKET	PO/4.0t(AD-BLK COATING)	1
05	TOP COVER	ALDC10(AD-BLK COATING)	1
06	BOLT CAP	SILICONE	12
07	BOLT	HEX(+)/SUS304/M8X15(SAMS)/NYLOK	4
08	FXTURE BRACKET	ALDC10(AD-BLK COATING)	1
09	GASKET	SILICONE	1
10	REFLECTOR	PC(Vacuum Evaporation Coating)	1
11	PC COVER	PC(CLEAR/5t)	1
12	SCREW	TAPPING SCREW/2X8	10
13	LENS	ACRYL	12
14	PCB ASSY	BLB 12LED	1
15	BOLT	ALLEN/SUS304/M3X6/NYLOK	4
16	BOLT	ALLEN/SUS304/M4X20/BLK/NYLOK	8
17	BOLT	HEX BOLT M10x25, NUT, WASHER	1
18	BOLT	ALLEN/SUS304/M8X20/NYLOK	4
19	TRUNNION BRACKET	PO/4.5t(AD-BLK COATING)	1
20	DAMPER	EPDM (80)	2

VXQF 405-4(Rev.1)



ISO-VIEW



REV. ZONE		REVISION RECORD	
ANGLE	⊕		
UNIT	mm	SCALE	1:1
SHEET	1/1	REV	P1
Qty	1	SIZE	A1
DESIGN :	K.J.H	DATE	15.05.07
CHECKED :	N.Y.H	DATE	15.05.07
APPROVAL :	J.S.M	DATE	15.05.07

WEIGHT :

FINISH :

MATERIAL :

CODE NO.: VX-155-05-00-0

PART NAME :
EXTERNAL VIEW

MODEL NAME :
BLB0712XX

