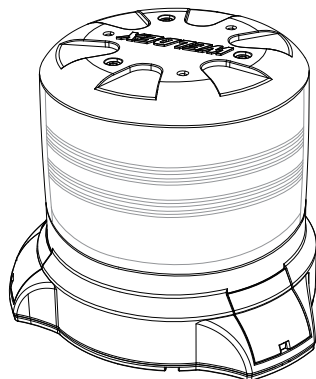


## INSTALLATION GUIDE



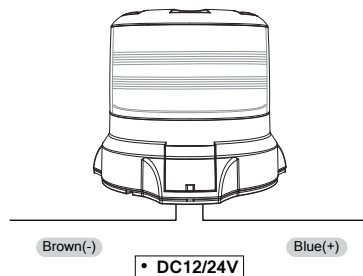
### LED BEACON LIGHT

Model No. WDBL-90R35/ 90R75

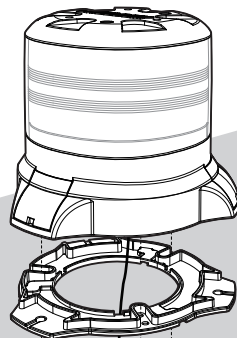
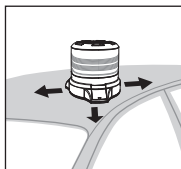
## 2. INSTALLATION

### Electrical connection

Blue: +, Brown: -  
Green/ Yellow: Mode



### A. Surface Mounting Type



a  
ø min. 8mm

b  
M4 LOCTITE



## 1. INFORMATION FOR USER

### General Warning



**WARNING**  
RISK OF ELECTRIC SHOCK  
DO NOT OPEN



To reduce the risk of electric shock  
- only allow a qualified installer or engineer to remove the cover.



The lighting flash with arrowhead symbol, within an equilateral triangle, is intended to alert the user to the presence of "dangerous voltage" within a product's enclosure that may be of sufficient magnitude to constitute a risk of electric shock.



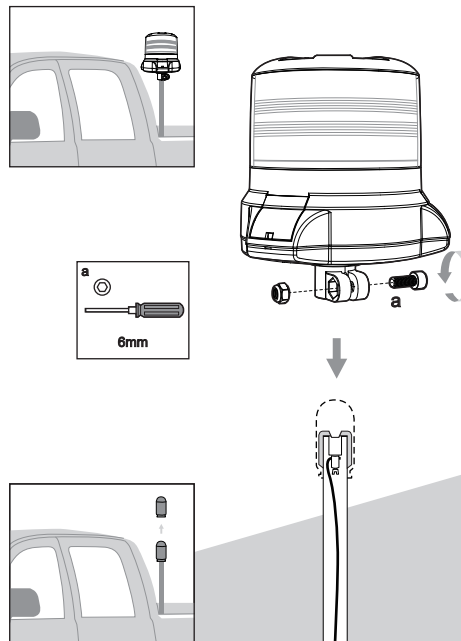
The exclamation point within an equilateral triangle is intended to alert the user to the presence of important operating and maintenance accompanying the appliance.

**WARNING** - Changes or modifications not expressly approved by manufacturer may affect the warranty on the equipment.

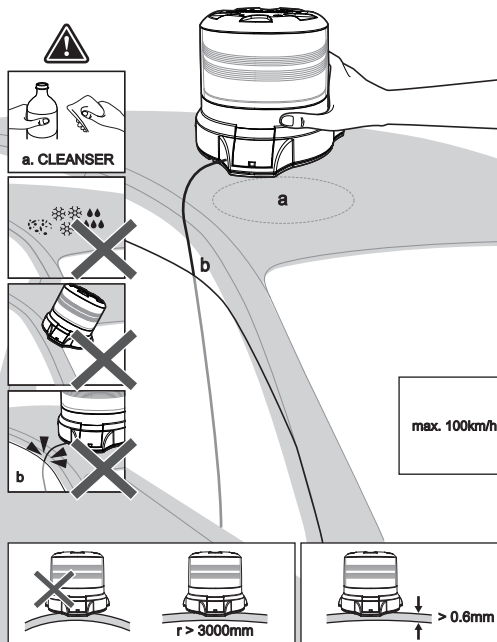
**CAUTION** - To prevent electric shock and risk of the hazards

• DO NOT use other than specified power source

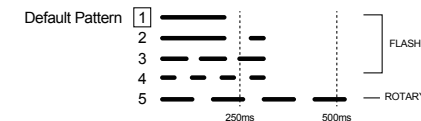
## B. Pole Mounting Type



## C. Magnet Mounting Type



## 3. POSSIBLE FLASH SEQUENCES



We recommend programming the lamp BEFORE mounting it to the roof. The programming mode allows the user to select one of the five available flash sequence and rotary.

Only the flash sequence 1 is approved for use in Europe.

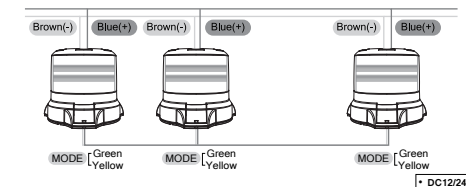
The corresponding flash pattern is not displayed during this mode. Five 1Hz flashes will be displayed instead, during which the green/yellow wire will be to be disconnected to program the unit to the desired pattern.

### Setting the flash sequences

- The lamp must be activated (blue to plus +, brown to minus -)
- The "synchronization" input (green/yellow) is connected to plus +.
- After approx. 2 seconds the flash sequence selection mode is activated; the lamp now starts to flash with approx. 1 Hz. After every flash cycle, the next flash sequence is activated, although it always starts with the first flash sequence. If you want to select the 4. flash sequence, the input "Select flash sequence" (green/yellow) needs to be disconnected from plus + after the 4. flash.

### Synchronising the lamp

- Program each lamp individually with the desired flash sequence as described in the Programming Mode instructions. We recommend selecting the same flash sequence for all lamps that are to be synchronized.
- Connect the lamps as specified in the circuit diagram. All green/ yellow lines are connected to each other.



## 4. TECHNICAL DATA AND CERTIFICATION

• WELDEX beacon have been officially type-tested within the scope of ECE R65,R10 and CISPR25 LEVEL 3.

They need to be mounted at the highest point of the vehicle and, when the vehicle is loaded during operation, they must be vertical to the road surface.

Item No.	WDBL-90R35	WDBL-90R75
Nominal Voltage	Multi-Voltage	Multi-Voltage
Operation Voltage DC (V)	10VDC ~ 36VDC	10VDC ~ 36VDC
Total current consumption (A)	0.4A ~ 2.9A (12VDC)	0.4A ~ 5.6A (12VDC)
Power consumption (W)	Max 35W	Max 75W
Operating temperature range (°C)	-40 ~ +60	-40 ~ +60
Protection category	IP 69K	IP 69K

