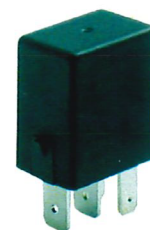
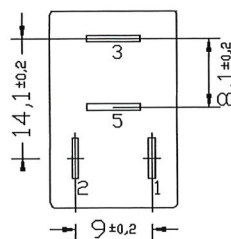
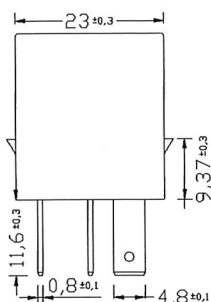
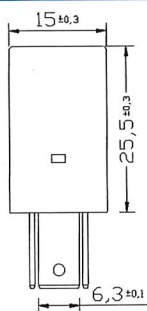


Description – Descrizione

Part Number:

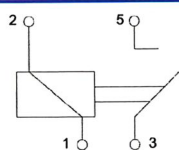
MICRO RELAY 12V 4 PINS 25A

Outline Dimensions – Dimensioni Esterne

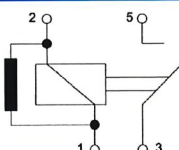


Wiring Diagram – Schema Circuito

75613190

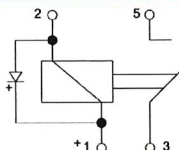


75613192



Normally Open – Normalmente Aperto

75613191

**Note:** Recommended polarity:
1+ & 3+Resistor Carbon Film
560Ω ± 5%

Diode IN4007 1000V 1A

Characteristics - Caratteristiche

Nominal Voltage Tensione Nominale	UN	12V	Nominal Current Corrente Nominale	IN	25A
Operating Voltage Limiti di Funzionamento	UOP	8V...16V	Max Continuous Current Corrente Massima Continua	ICM	23°C 25A N/O 85°C 17A N/O
Voltage Drop Caduta di Tensione	ΔU	≤ 50 mV @IN	Max Switched Current ON Corrente Massima di Scambio ON	IscA	120A
Pull-In Voltage Tensione di eccitazione	UI	≤ 8V @TP	Max Switched Current OFF Corrente Massima di Scambio OFF	IscA	30A
Pull-Off Voltage Tensione di diseccitazione	Uo	≥ 1,5V @TP	Operating Temperature Temperatura di Funzionamento	TOP	- 40°C ... + 85°C
Test Voltage Tensione di Prova	UP	13V ± 0,2 V	Storage Temperature Temperatura d'immagazzinaggio	TSTO	+ 110°C @ 2h
Coil Current Corrente della Bobina	Ic	160mA ±15%	Test Temperature Temperatura di Prova	TP	+ 20°C ± 2°C
Operate Time with Load Durata con carico	TP	100.000 times/TP IN 2"ON/ 2"OFF	Unit Weight Peso	W	20g

Materials – Materiali

Baseplate – Basetta	Nylon PA 6,6 + 30% Glass fibre Black	Terminals – Terminali	Cu Zn Term. 1,2 (4,8X0,8mm) Term. 3,5 (6,3X0,8mm)
Cap - Coperchio	Nylon PA 6,6 + 15% Glass fibre Black	Fixed Contact – Contatto Fisso	Ag Ni 90/10
Bobbin Wire – Filo Rame	12V P155 - IEC 60317	Moving Contacts – Contatto Mobile	Ag Ni 90/10
Resin - Resina	Epoxide		

Additional Data – Informazioni aggiuntive

In conformity with:	ISO 7588 – DIN 46244 – ISO 8092	EU Dir. 2002/95/EC RoHS	DIN 40050: IP 5K4 Terminals pointing downwards
In conformità con:	UNI EN ISO 9001-2000	DIR. 95/54 CE REG. 10 ECE-ONU/02	Autoelettrici IMDS:75948