

TECHNICAL DATA SHEET
Ref. 530001
 UNIPOLAR ELECTROMAGNETIC
 BATTERY MASTER SWITCH
 24VDC / 300A



GENERAL CHARACTERISTICS

Protection degree: IP65
 Ambient temperature: -40°C to +80°C
 Weight: 1.2 Kg approx.
 Contacts: Double cut copper
 Connections: not polarized
 Is working in all positions

FIELDS OF APPLICATION

Handling vehicles, industrial vehicles,
 agriculture machinery, industry...

CONTROL CIRCUIT

Breakaway starting current: 4.5 A (20 ms)
 Holding current: 0,25 A
 Absorbed power from the coil: <6 W
 Guaranteed interlocking tension: 18 V
 Disengaging tension: ≤ 6 V
 Connections by M5 terminals
 Tightening torque: 0.4 +/- 0.2 daN·m

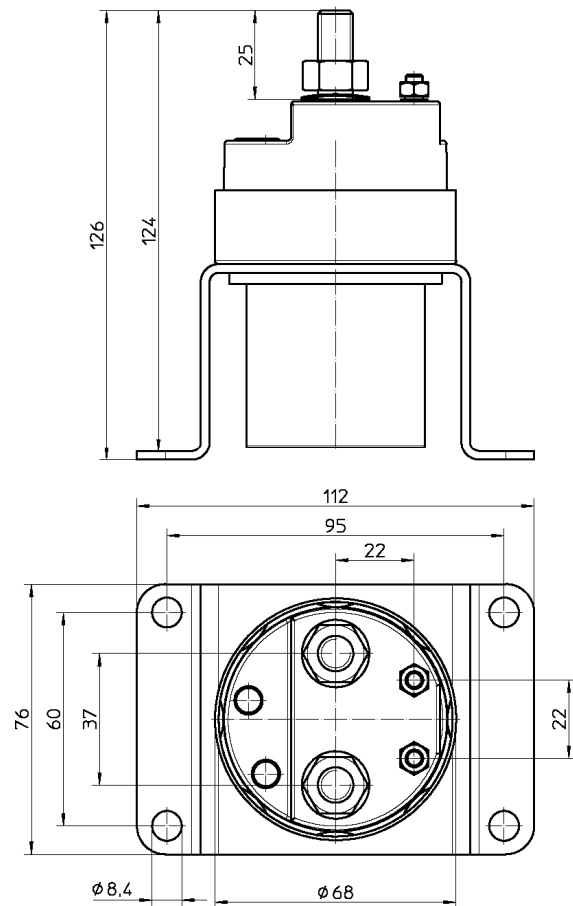
POWER CIRCUIT

Connection: M10 terminals
 Tightening torque: 1.4 +/- 0.2 daN·m
 Type: normally open unipolar
 Max. using tension: 48 V
 Capacity:
 300 A in continuous
 2400 A during 1 second
 600A during 20 seconds.

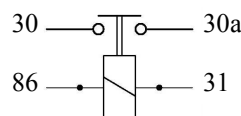
PARTICULAR CHARACTERISTICS:

Black galvanised finishing.
 Corrosion test: 200 h salt spray resistance

Size diagrams



CIRCUIT:



Fixing diagram

