

TECHNICAL DATA SHEET

Ref. 500017

UNIPOLAR BATTERY

MASTER SWITCH

24VDC / 350A



GENERAL CHARACTERISTICS

Protection degree: IP67
Ambient temperature: -40°C to +85°C
Weight: 0.711 Kg approx.
Contacts: Copper
Connections: not polarized

FIELDS OF APPLICATION

Trucks, handling vehicles, industrial vehicles,
agriculture machinery, industry...

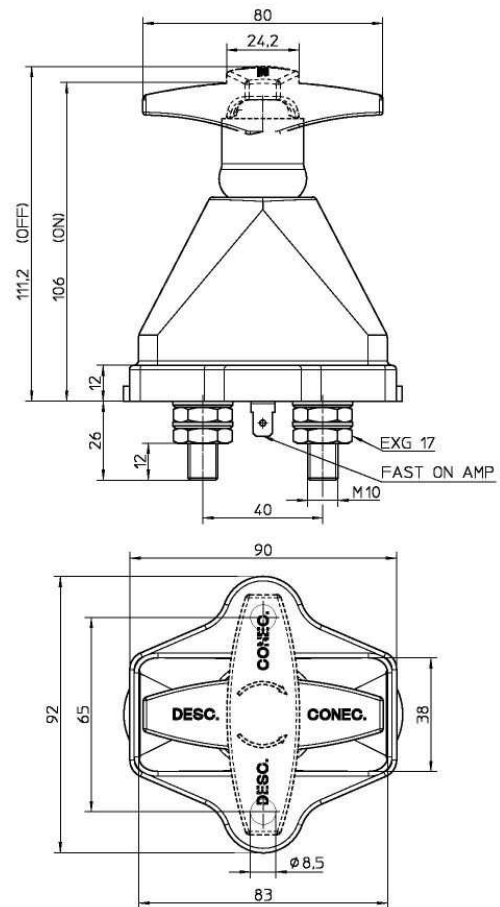
POWER CIRCUIT

Connection: M10 terminals / Aux: Fast On
Tightening torque: 1.5 +/- 0.1 daN·m
Type: D2 normally open
Nominal current: 350 A
Nominal voltage: 24 VDC
Max. capacity: 3500 A during 5 seconds

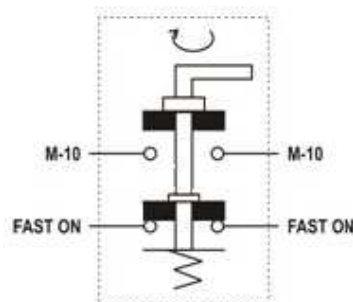
PARTICULAR CHARACTERISTICS:

Fixed Handle
Auxiliary circuit for alternator
with separate controller unit

Size diagrams



Connection diagram



Fixing diagram

