

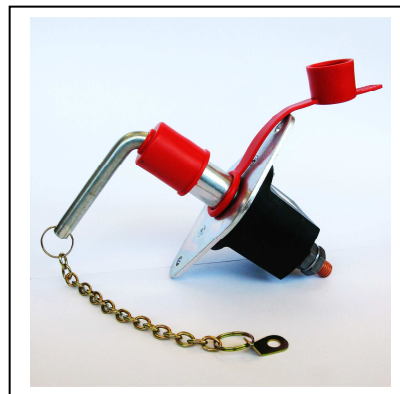
## TECHNICAL DATA SHEET

# Ref. 500010

## UNIPOLAR BATTERY

## MASTER SWITCH

## 24VDC / 250A



### GENERAL CHARACTERISTICS

Protection degree: IP65

Ambient temperature: -40°C to +85°C

Weight: 0.562 Kg approx.

Contacts: Copper

Connections: not polarized

### FIELDS OF APPLICATION

Handling vehicles, industrial vehicles,  
agriculture machinery, industry...

### POWER CIRCUIT

Connection: M10 terminals

Tightening torque: 1.5 +/- 0.1 daN·m

Type: D1 normally open

Nominal current: 250 A

Nominal voltage: 24 VDC

Max. capacity: 2500 A during 5 seconds

### PARTICULAR CHARACTERISTICS:

Removable handle

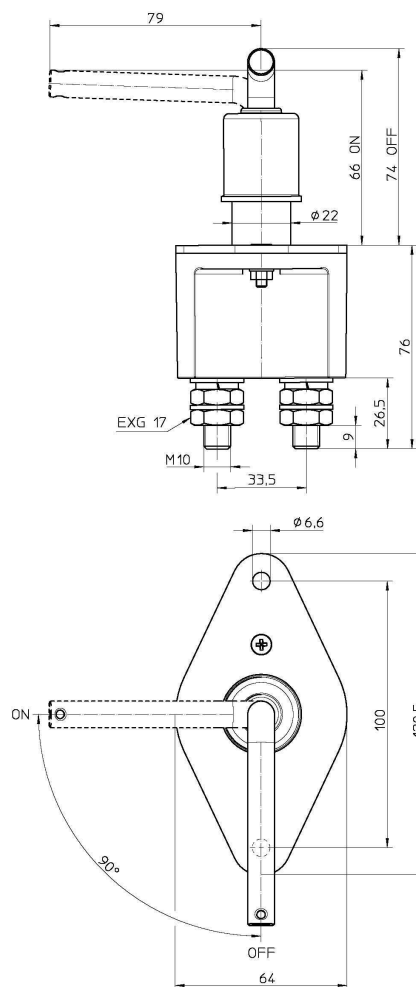
### SPARE PARTS

Handle + chain + protector 520020

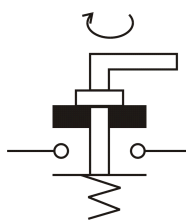
Handle 520029

Strap + PVC protection 520003

### Size diagrams



### Connection diagram



### Fixing diagram

