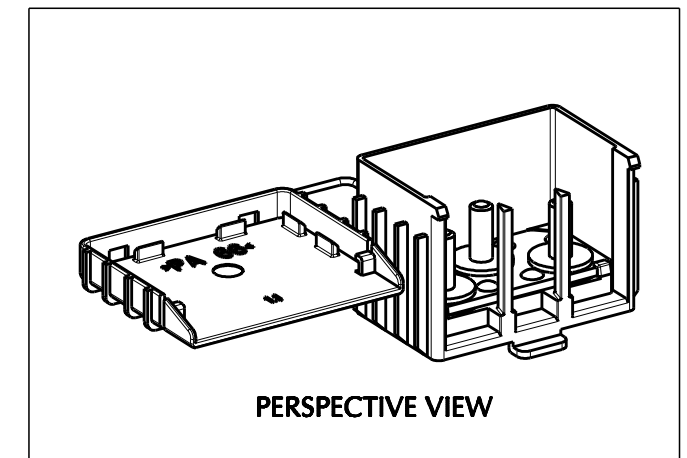
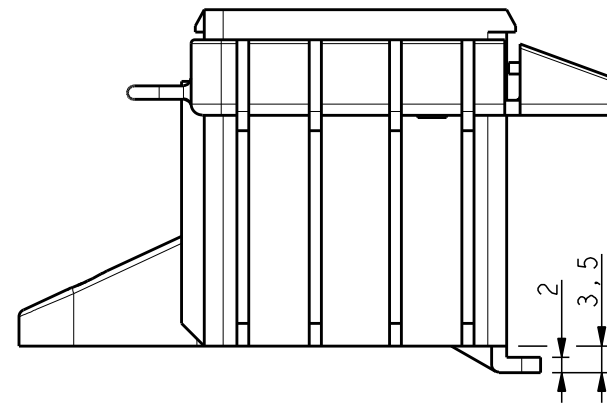
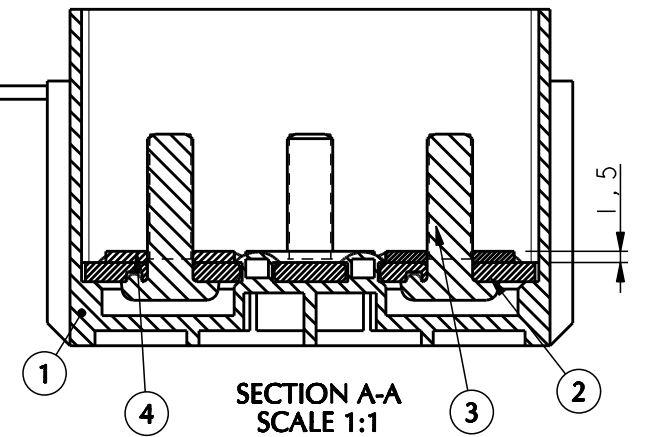


UNCONTROLLED COPY
in case of drawing updating/revision
NO AUTOMATIC
resubmission will follow



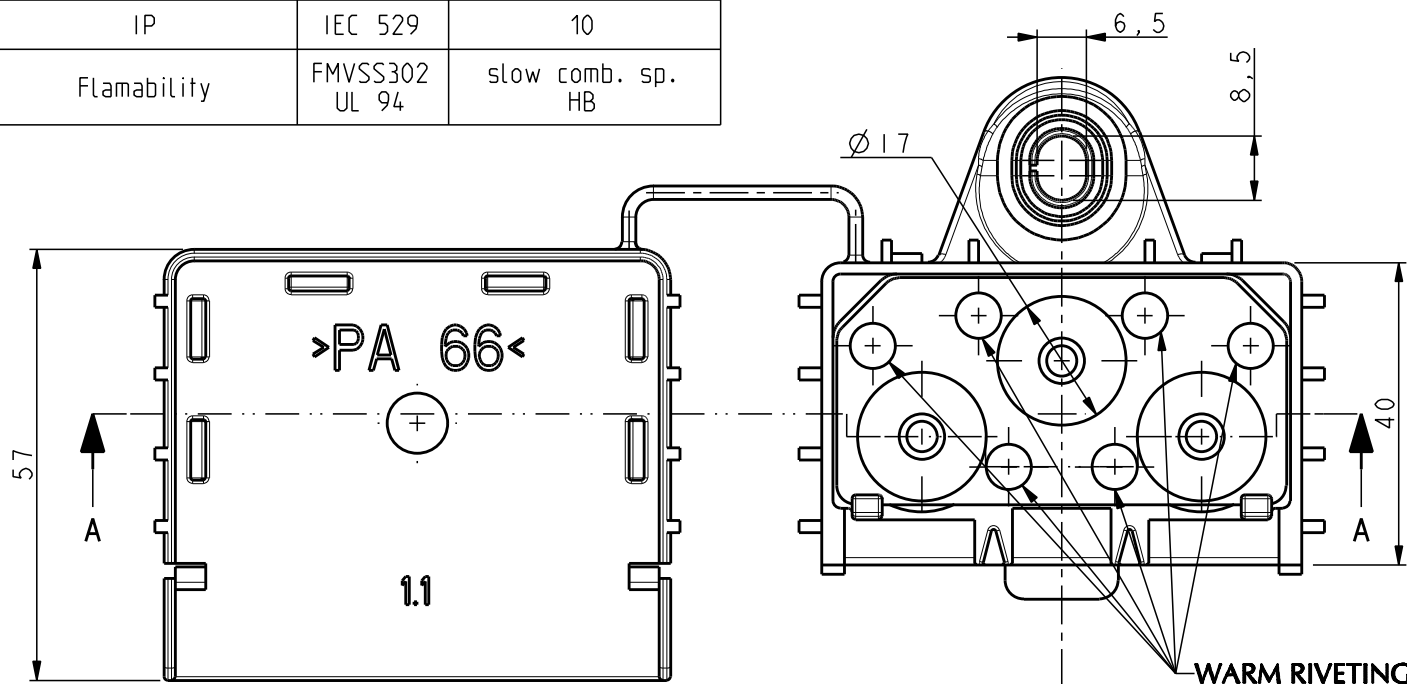
OPERATING FEATURES

FEATURE	UNIT	VALUE
Vmax	V	42
Tmin - Tmax	°C	-40 / +120
I _{max}	A	-
Screw torque M6	Nm	5.5±20%
IP	IEC 529	10
Flamability	FMVSS302 UL 94	slow comb. sp. HB

POS.	Q.TY	DENOMINATION	MATERIAL
5	1	COMPRESSION LIMITER	Steel P01 - Zinc plated
4	3	SPACER	Steel 140 HV - Zinc plated
3	3	SCREW M6	Steel R50 CV4 - Zinc plated
2	1	CONTACT PLATE	Steel P12 - Zinc plated
1	1	HOUSING	PA 66 - Color BLACK

MTA	MTA P/N	4541202	Denom. BRANCH KNOT 3M6	
	Draw No.	B0-045.137A	Used for -	
Rel. Level	APPROVED	Draw for	CLIENT	Family CONNECTORS JOINT
Draft.	30.05.11	R.BUSSACCHINI	Scale	1:1
Chk	04.10.11	E.ZABAGLIO	Weight(g)	98
PQApp	02.12.11	M.ROSSI	Lin.Tol.±	0.5
App.	02.12.11	M.CORBANI	Ang.Tol.±	1°
			A3	Sheet 1/1
			Dimensions in (mm)	
			Material	SEE TABLE
			Coating	SEE TABLE
			Color	SEE TABLE

No.	Reason for Revision	Date	Name
1	TOLERANCE UPDATED	02.12.11	R.BUSSACCHINI



SCALE 1:1

All proprietary rights reserved by MTA S.p.A. - This drawing shall not be reproduced, in any way, for the manufacture of the component or unit herein illustrated and must not be released to other parties, without written consent. Any infringement will be legally pursued.