

## Fuse Box With Cover For Blade Fuse - 12 Circuit With Negative Bus

Two positive distribution to divide operating amperage

Storage for two spare fuses

Accepts ring or spade type terminals

Accepts ATO<sup>®</sup> and ATC<sup>®</sup> fast acting blade fuses

Accepts Longer Size Circuit Breaker type blade fuses

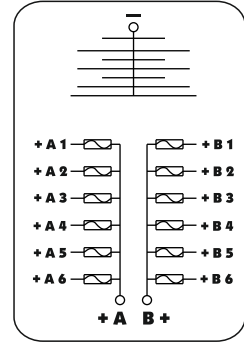
Clear cover made from polycarbonate

Base made from reinforced polycarbonate

Cover satisfies ABYC/USCG requirements for insulation

Tin plated copper buses and fuse clips

Small format labels for circuit identification (sold separately)



**Wiring Diagram**

### Technical Specifications- 26 0500

#### 12 Blade Fuse Box

Max Amps per Circuit:	30 A
Max Amps per Block:	120 A
Max Voltage:	32V DC
Recommended Wire Size:	Positive & Negative Feed 14-25mm
	Individual Circuits 4-9 mm
Recommended Torque:	#8 Screw 18 in-lb #10 Stud 24 in-lb
Block Dimensions:	165 x 94.5 x 56.6 mm

