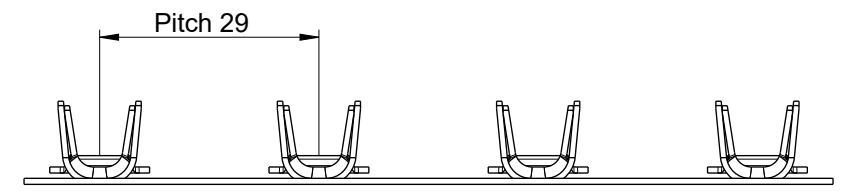
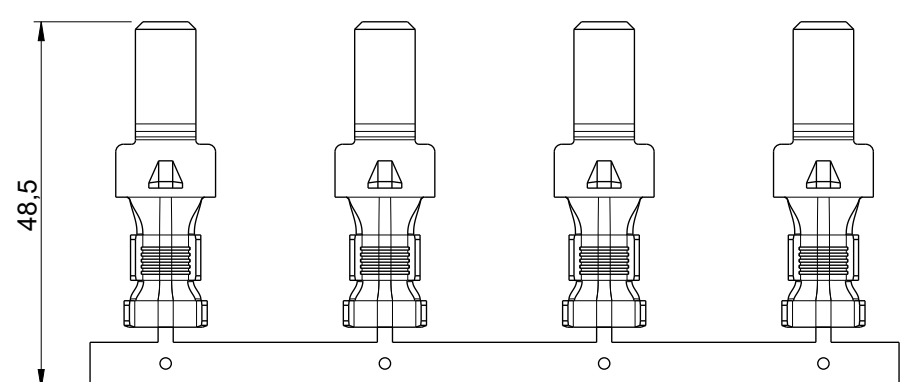
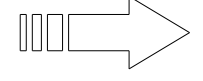


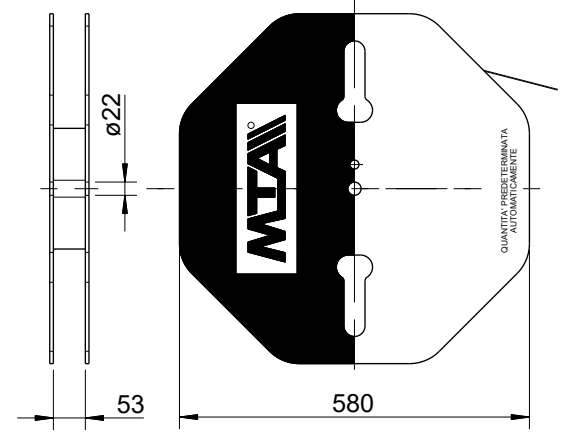
1		2		
No.	AREA	VALUE	UP TO MTA	UP TO CUSTOMER
01	-	-	-	-



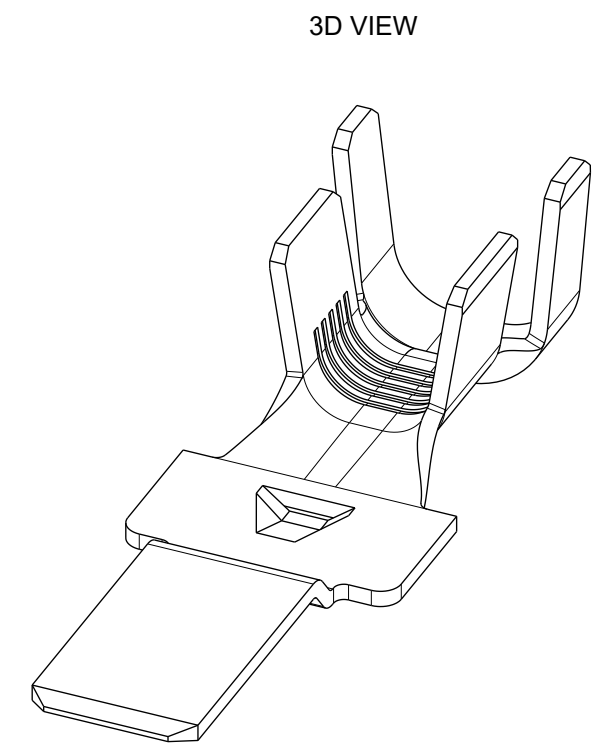
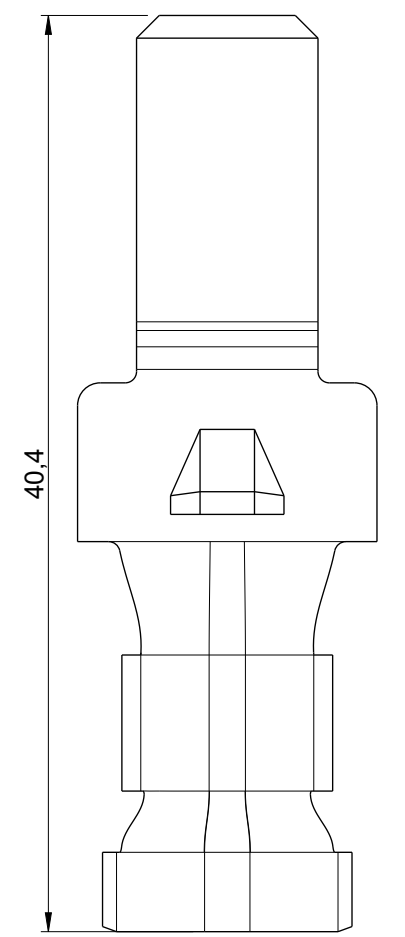
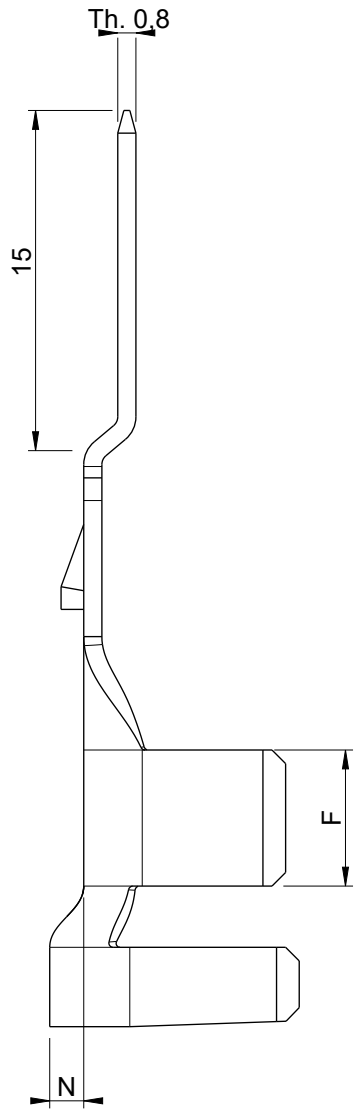
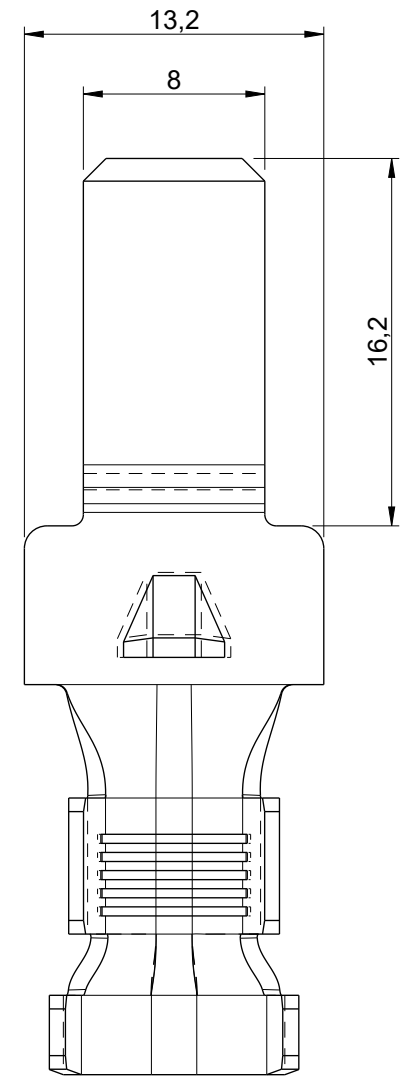
UNWINDING DIRECTION OF THE REEL



SCALE 1:1

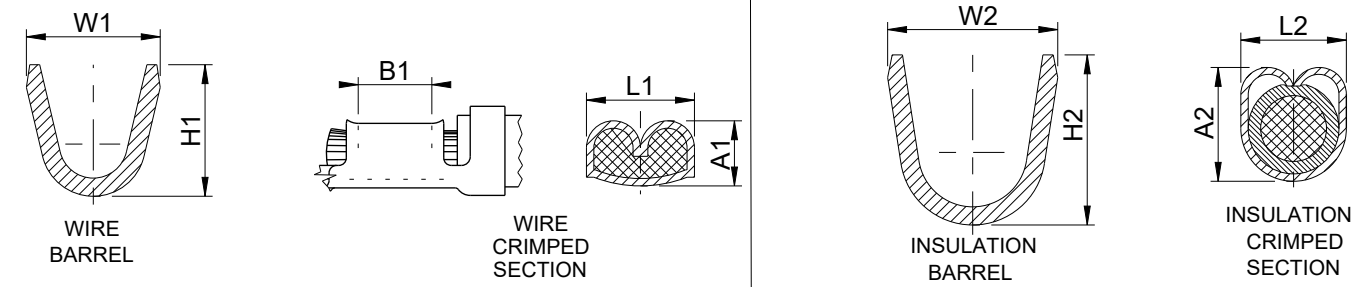


6				7		8	
REV.	DESCRIPTION			NAME	DATE		
0	FIRST ISSUE			E.ZABAGLIO	23/05/00		
1	CRIMP STATEMENTS ADDED			E.ZABAGLIO	01/06/01		
2	FOR P/N 1707720, A1 AND L1 VALUES UPDATED ACCORDING TO CRIMPING SPECIFICATION			E. ROSSI	11/12/19		
3	ALIGNED DIMENSION 15mm ACCORDING TO RMP 1100520-06			S. ALBERTELLI	01/08/22		



3D VIEW

CRIMP STATEMENTS



MTA P/N	N	F	MATERIAL	RATED CURRENT (A)	Wire Sec (mm²)	CONDUCTOR				INSULATION				TEAR OUT FORCE (N)	
						H1	W1	A1 ±0.05	L1 ±0.2	B1	H2	W2	A2		L2
1707700	0	5	Cu ETP	28	2.5	5.8	5.9	2.60	4.60	4.00	7.5	7.5	-	6.12	235
					4			2.95	4.60	4.00			-	6.16	
1707710	1.5	6	Cu ETP	48	6	7	7	3.45	5.63	4.80	9.4	9.7	-	7.22	400
					8			3.70	5.60	4.80			-	7.20	
1707720	1.5	6	Cu ETP	75	10	8.9	9.3	3.85	7.09	4.80	11	11	-	8.78	600
					16			4.35	7.15	4.80			-	8.91	

<b>MTA</b>		MTA P/N	1707720	Denom.	TERMINAL POWER WP M800
		Draw No.	B0-241.053C	Used for	SECTION CABLE 10-16 mmq
		Draw for	CUSTOMER	Material	Cu ETP
Draft date	23.05.00	Scale	3:1	CAD MODEL Weight(g)	3.65
Issued by	E.ZABAGLIO	Lin.Tol.±	0.5	Ang.Tol.±	2
Verified by	A.CROTTI	Dimensions in (mm)	1/1	Coating	Sn
PQ Approval	A.BIFFI	CAD Software PTC Creo		Colour	-
TD Approval	M.ROSSI			Status	
REV.	3	PAPER COPY ONLY FOR REFERENCE CHECK LAST REVISION RELEASE ON ELECTRONIC VERSION			

**RELEASED  
29/09/2022**

All proprietary rights reserved by MTA S.p.A. - This drawing shall not be reproduced, or in any way utilized, for the manufacture of the component or unit herein illustrated and must not be released to other parties, without written consent. Any infringement will be legally pursued.