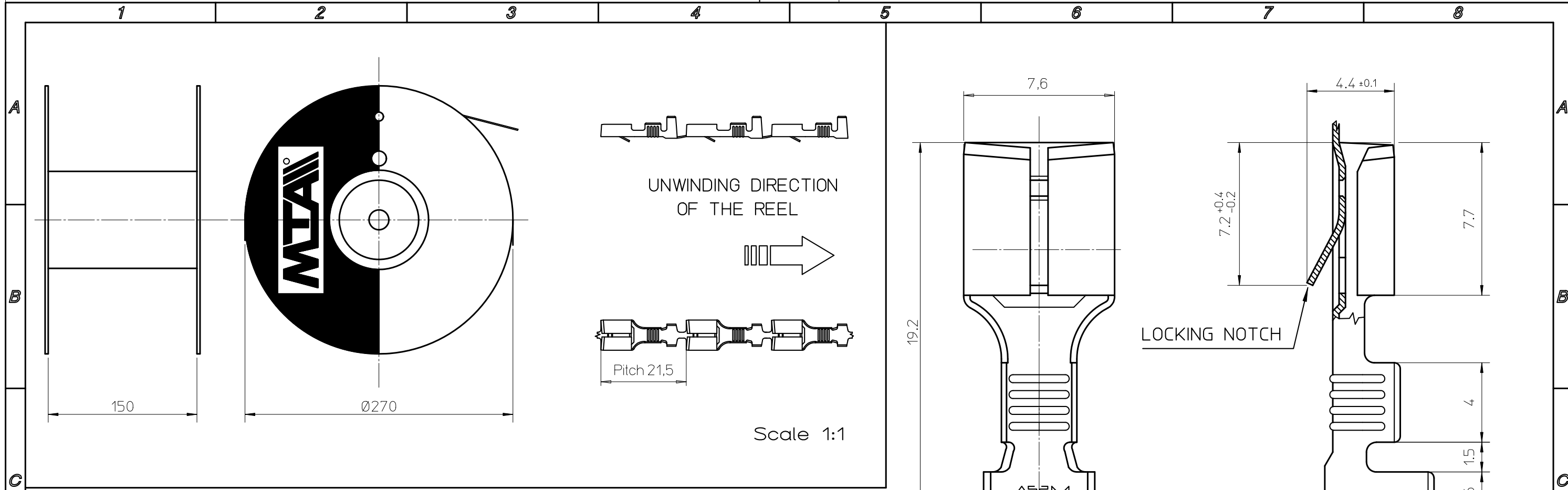
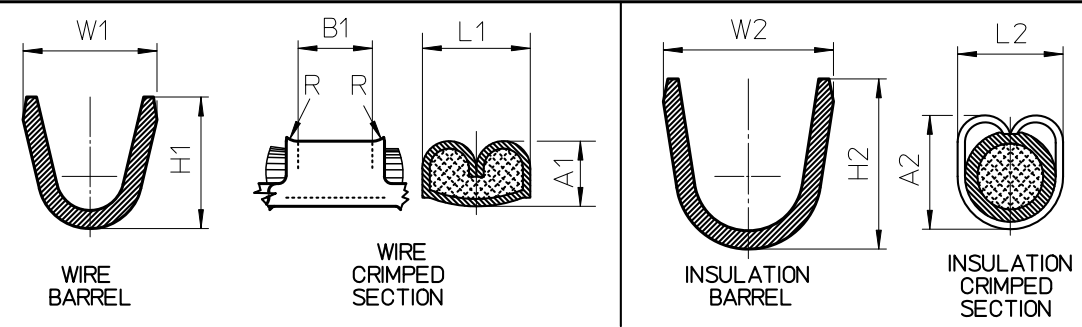


All proprietary rights reserved by MTA S.p.A. - This drawing shall not be reproduced, or in any way utilized, for the manufacture of the component or unit herein illustrated and must not be released to other parties, without written consent. Any infringement will be legally pursued.



UNCONTROLLED COPY
 in case of drawing updating/revision
 NO AUTOMATIC
 resubmission will follow

CRIMP STATEMENTS



VALUES OBTAINED USING A ---1 PRESS

MTA P/N	RATED CURRENT (A)	Wire sec. (mm ²)	CONDUCTOR				INSULATION				TEAR OUT FORCE (N)	
			H1	W1	A1 ±0.05	L1	B1	H2	W2	A2		L2
1101650	20	1	3.5	3.8	1.50	2.90	3.20	5.2	5.8	3.60	3.80	115
1301650		1.65			2.90	3.20	3.80			3.80	155	
1701650		2			1.70	2.90	3.20			3.80	3.80	195
1701655		2.5			1.80	2.90	3.20			3.95	3.80	235
1901650					1.80	2.90	3.20					

1901650	B0-240.014A	-	YES	LOOSE
1701655		Tin Plated	NO	REEL
1701650		Tin Plated	YES	REEL
1301650		-	YES	LOOSE
1101650		Tin Plated	YES	LOOSE
MTA P/N	DRAW N°	COATING	LOCKING NOTCH	PACKAGE

MTA P/N: 1701650

Draw No.: **B0-240.014A**

Denom. FASTON TERMINAL F630 W/LOCKING NOTCH

Used for SECTION CABLE 1-2.5 sqmm

Rel. Level		APPROVED			Draw for CLIENT			Relevant Standard
Date	Name	Scale	Weight(g)	Lin.Tol.±	Ang.Tol.±	Material CuZn		
Draft. 06/06/1996	L.NARRA	5:1	~0.65	0.5	2	Coating SEE TABLE		
Chk 16/07/2014	M.PASQUANDREA					Color		
PQApp 22/07/2014	M.ROSSI							
App. 22/07/2014	M.PASQUANDREA							

5 REEL CONFIGURATION MODIFIED

No. Reason for Revision

Date 16/07/2014

Name S.BEDUSCHI