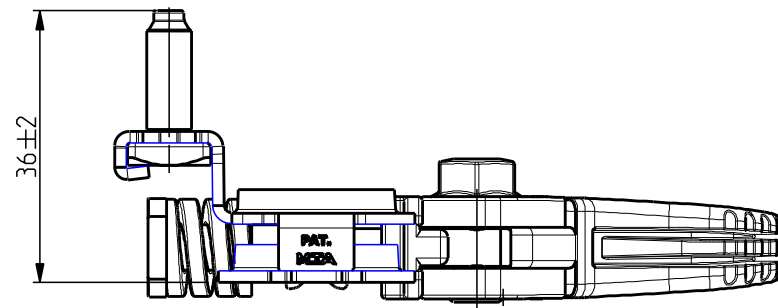
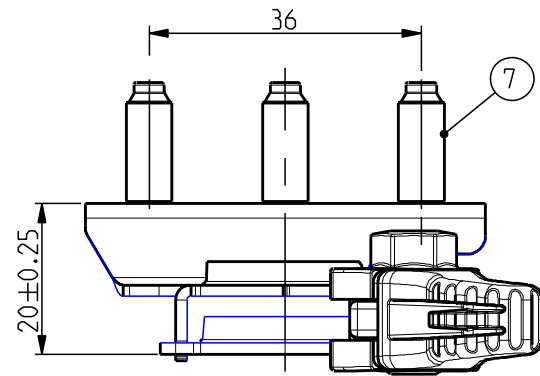
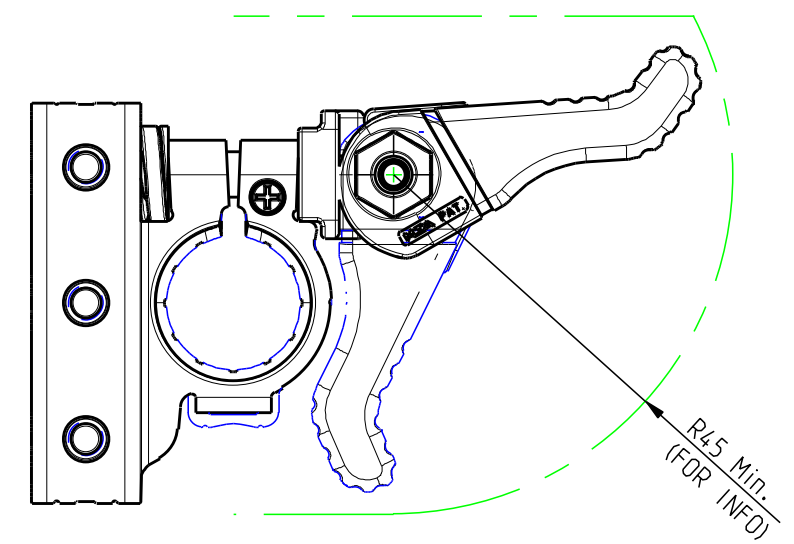


OPERATING FEATURES

FEATURE	UNIT	VALUE
T.MIN - T.MAX	°C	-40 / +120
FLAMABILITY	UL 94	HB
SCREW TORQUE M6(Pos.7)	Nm	5.5 ±20%

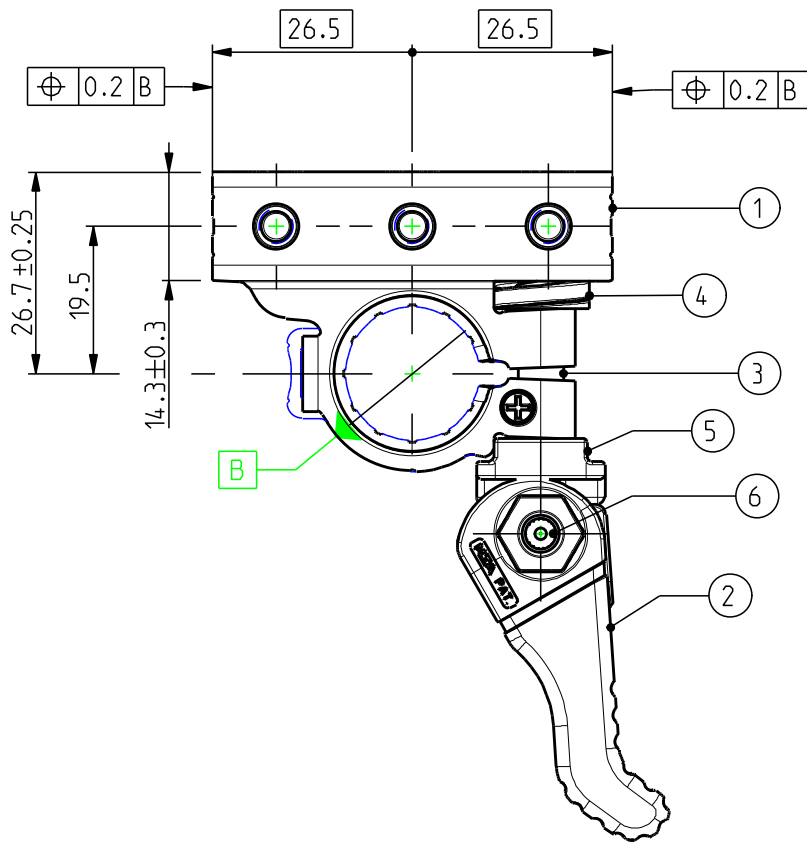
OPENING/CLOSING LEVER OVERALL RAY

SCALE 1:1

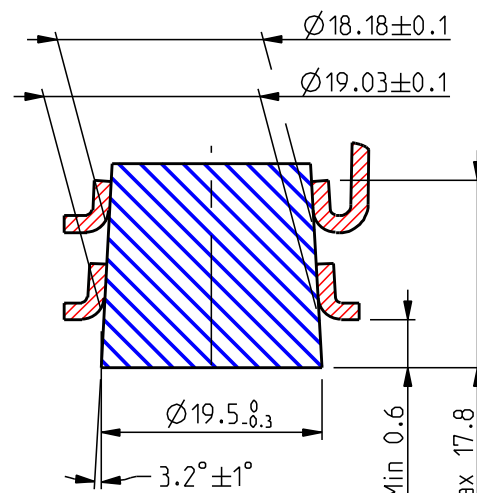


ONLY FOR REFERENCE

POS.	Q.TY	DENOMINATION	MATERIAL
7	3	SCREW M6	STEEL CL. 8.8(ISO 898) Fe/Zn 7 (ISO 4042)
6	1	PIN	STEEL CL. 8.8(ISO 898) Fe/Zn 7 (ISO 4042)
5	1	SQUARE WASHER	PBT-GF40 (ISO 1043) COLOR GREY
4	1	SPRING	54SiCr6(DIN 17223) Delta Seal Delta Tone
3	1	PIVOT	STEEL CL. 8.8(ISO 898) Fe/Zn 7 (ISO 4042)
2	1	LEVER	PBT-GF40 (ISO 1043) COLOR GREY
1	1	TERMINAL	CuZn33 (ISO 1190-1) Tin Plated BLANK REEL THICKNESS 1.5.8.05



BEST DIMENSION OF BATTERY TERMINAL POSITIONING ON BATTERY POLE (IEC NORM 60095-2 DRAFT 2000-10)



SCALE 3:2

NOTE

THE MINIMUM FORCE TO INSTALL THE BATTERY TERMINAL IN THE OPERATION RANGE IS 80N

All proprietary rights reserved by MTA S.p.A. - This drawing shall not be reproduced, or in any way utilized, for the manufacture of the component or unit herein illustrated and must not be released to other parties, without written consent. Any infringement will be legally pursued.

<b>MTA</b>		MTA P/N	1507975				Denom.	BATTERY TERM. QR M666(+) SX		
Rel. Level		Approved	Draw for	CLIENT			Used for	-		
Rel. Level	Date	Name	Scale	Weight(g)	Lin.Tol.±	Ang.Tol.±	Material	SEE TAB.		
Draft.	11.05.07	E.ZABAGLIO	1:1	71	0.5	2	Coating	-		
Chk	11.05.07	E.ZABAGLIO	A3		Dimensions in (mm)	Sheet	Color	SEE TAB.		
PQApp	16.10.07	R.GONZALEZ					1/1			
App.	16.10.07	M.CORBANI								
No.	Reason for Revision		Date			Name				