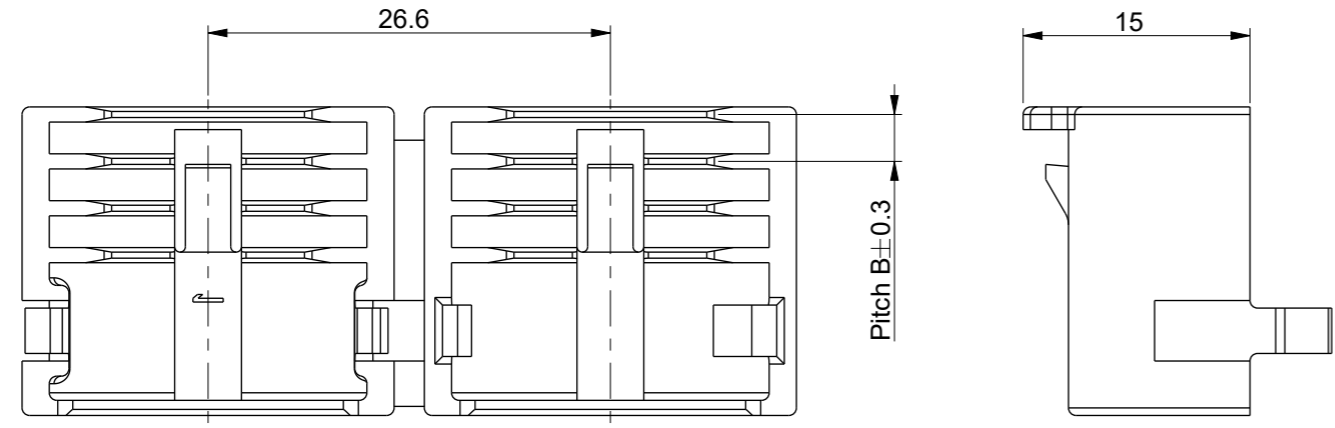
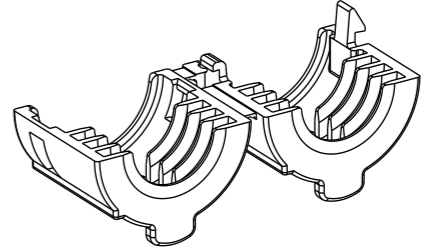
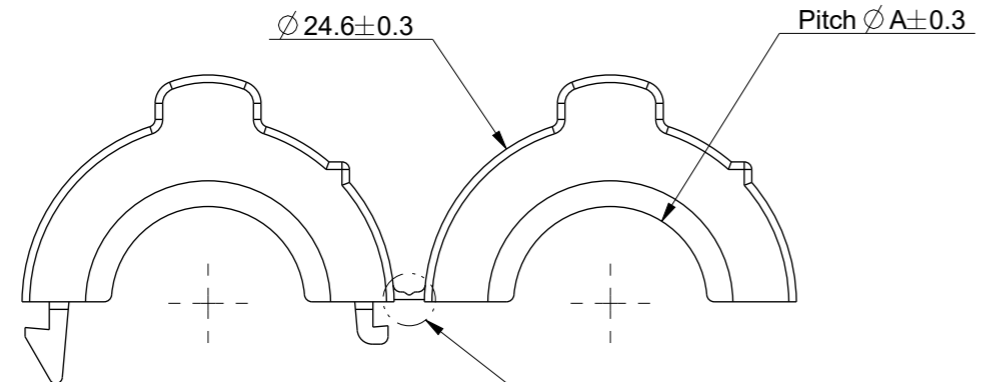


| No. | AREA | VALUE |
|-----|------|-------|
| 01 | - | - |

| REVISION HISTORY | | | |
|------------------|---|---------------|----------|
| REV. | DESCRIPTION | NAME | DATE |
| 0 | FIRST ISSUE | E.ZABAGLIO | 24.05.00 |
| 3 | NEW VERSION ADDED | R.BUSSACCHINI | 02.12.11 |
| 4 | ADDED P/N 0301199/0x | D.SCARPETTA | 27.06.18 |
| 5 | MODIFIED CORRUGATED TUBE P/N FOR RETAINERS 0300557 AND 0301199/0X | D.SCARPETTA | 29.10.19 |
| 6 | MODIFIED P/N (INTO 0301199/1x) AND RELATED CORRUGATED TUBES FOR THE RETAINER 0301199/0x. ADDED NOTE ON HINGE FUNCTIONALITY. | D.SCARPETTA | 17.02.20 |

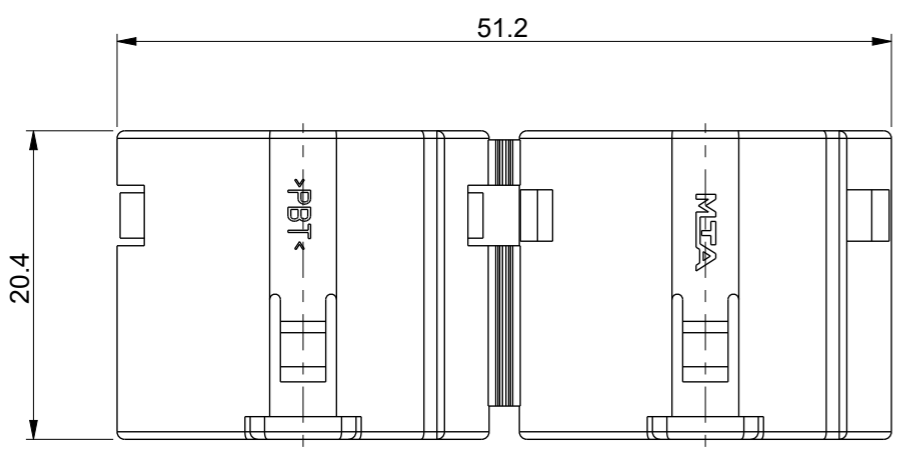


| OPERATING FEATURES | | |
|--------------------|-----------|---------------|
| FEATURES | UNIT | VALUE |
| TEMPERATURE RANGE | °C | -50 / +130 |
| FLAMMABILITY | UL 94 | HB |
| | FMVSS 302 | <= 100 mm/min |



3D VIEW
SCALE 1:1

HINGE FUNCTION IS FOR MOLDING ONLY.
ONCE THE PART IS INSTALLED, THE FUNCTIONALITY
IS GUARANTEED BY THE HOOKING TEETH.



| | | | | |
|------------|---------------------------|--|------|-----|
| 0301199/1x | POWER TUBE RETAINER D.16 | 1/15337/87 or /83 1/15317/87 or /83 (FCA STD. 91223) | 18.2 | 3.2 |
| 0300557 | POWER TUBE RETAINER D.13J | 1/10057/87 or /83 1/15316/87 or /83 (FCA STD. 91223) | 15.2 | 3.4 |
| 0300464/1x | POWER TUBE RETAINER D.13 | 81590 (IVECO STD. 11-8223) | 14.3 | 2.7 |
| 0300455/1x | POWER TUBE RETAINER D.11 | 81579 (IVECO STD. 11-8223) | 12.8 | 3.1 |
| MTA P/N | DENOMINATION | CORRUGATED TUBE P/N | Ø A | B |

UNCONTROLLED COPY
in case of drawing updating/revision
NO AUTOMATIC
resubmission will follow

| | | | | |
|------------|----------|-------------|-----------------------|--------------------------|
| MTA | MTA P/N | 0300455/1x | Denom. | POWER TUBE RETAINER D.11 |
| | Draw No. | B0-111.B03A | Used for | FUSEHOLDER MIDIVAL 6WAY |
| | Date | Name | Draw for | CUSTOMER |
| Draft. | 24.05.00 | E.ZABAGLIO | Scale | CAD MODEL Weight(g) |
| Chk | - | - | 3:1 | 2 |
| Verif. | 17.02.20 | A.CROTTI | Lin.Tol.± | 0,5 |
| PQApp | 18.02.20 | A.BIFFI | Ang.Tol.± | 1° |
| App. | 26.02.20 | G.SPATARO | Dimensions in (mm) | Sheet 1/1 |
| | | | CAD Software PTC Creo | |
| | | | Coating | - |
| | | | Colour | BLACK |
| | | | Note | |

REV. 6 All proprietary rights reserved by MTA S.p.A. - This drawing shall not be reproduced, or in any way utilized, for the manufacture of the component or unit herein illustrated and must not be released to other parties, without written consent. Any infringement will be legally pursued.